

# Lisinopril Assay and Related Substances Method per IP Monograph

Krishna Chaitanya Routh<sup>1</sup>, Swetha Kotikalapudi<sup>1</sup>, and Bryan Tackett, PhD<sup>2</sup>

<sup>1</sup>India Phenologix Lab, Phenomenex India, Hitech Defence and Aerospace Park Industrial Area, Mahadeva Kodigehalli, Holbi, Jala Taluka, Bengaluru 562149, India

<sup>2</sup>Phenomenex Inc., 411 Madrid Ave., Torrance, CA 90501 USA

## Overview

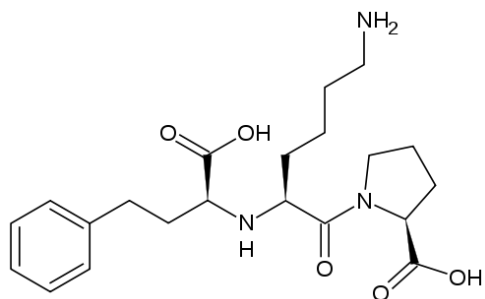
Lisinopril is an orally active angiotensin-converting enzyme (ACE) inhibitor used for the treatment of hypertension, heart failure, and acute myocardial infarction. The development of a quick and efficient analysis of Lisinopril and its related substances is of interest for generic drug manufacturers. In this application note, we report the separation of Lisinopril and its related substances using a Luna™ 5 µm C8(2) column and a Kinetex™ 5 µm C8 column according to the Indian Pharmacopoeia (IP) Monograph for Lisinopril.

System suitability per IP Monograph for the Lisinopril Assay is theoretical plates not less than (NLT) 180, a tailing factor not more than (NMT) 2.0, and a percent relative standard deviation (%RSD) of NMT 2.0 % for Lisinopril. System suitability per IP Monograph for Lisinopril Related Substances is a tailing factor NMT 3.0 for Lisinopril.

The results above clearly show that the system suitability criteria (tailing factor, area %RSD, and theoretical plates) for both assay and related substances per the IP monograph for Lisinopril were met with both the Luna 5 µm C8(2) and Kinetex 5 µm C8 columns. While the data demonstrates that the use of either column would be acceptable, the core-shell Kinetex C8 column provided shorter run times, while the Luna C8(2) column provided slightly better peak shape.

All solutions were prepared as indicated in the IP Monograph for Lisinopril. Lisinopril RS (Catalog No. 1368609) was purchased from USP.

Figure 1. Lisinopril



## LC-UV Conditions - Assay

**Column:** Luna 5 µm C8(2) ([00G-4249-E0](#))

Kinetex 5 µm C8 ([00G-4608-E0](#))

**Dimensions:** 250 x 4.6 mm

**Mobile Phase:** Acetonitrile / Buffer (4:96, v/v)

Buffer: 2.76 g of Monobasic Sodium Phosphate was dissolved in 900 mL of water in a 1000 mL volumetric flask. Adjusted pH to 5.0 with 1N Sodium Hydroxide and diluted with water to volume.

**Flow Rate:** 1 mL/min (Isocratic)

**Injection Volume:** 20 µL

**Temperature:** 50 °C

**Detector:** UV @ 210 nm

**System:** Waters® ACQUITY® Arc HPLC

## LC-UV Conditions - Organic Impurities

**Column:** Luna 5 µm C8(2) ([00G-4249-E0](#))

Kinetex 5 µm C8 ([00G-4608-E0](#))

**Dimensions:** 250 x 4.6 mm

**Mobile Phase:** A: Acetonitrile / Buffer (30:970, v/v)  
B: Acetonitrile / Buffer (200:800, v/v)

Buffer: 0.02 M Sodium Dihydrogen Phosphate, adjusted to pH 5.0 with 5 % w/v solution of Sodium Hydroxide and filtered.

Gradient: Time (min)	%B
0.00	0
35.0	30
45.0	30
55.0	100
65.0	0
75.0	0

**Flow Rate:** 1.8 mL/min

**Injection Volume:** 20 µL

**Temperature:** 50 °C

**Detector:** UV @ 210 nm

**System:** Waters ACQUITY Arc HPLC

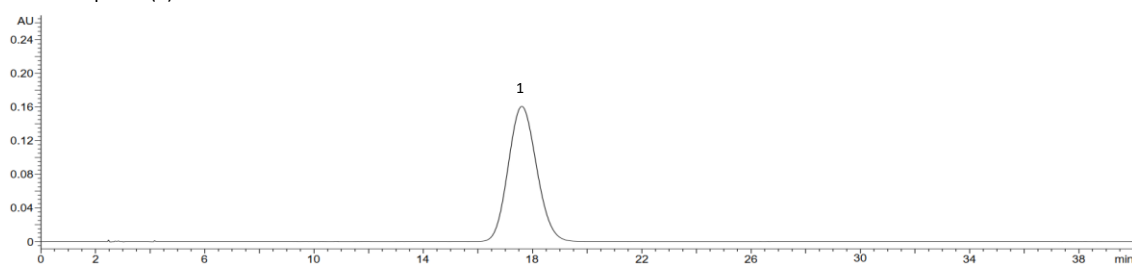


**Table 1.** Preparation of Solutions

Solution	Composition
Reference Solution – Assay	30 mg of Lisinopril RS was transferred into a 100 mL volumetric flask. 70 mL of water was added and sonicated to dissolve. Made up to volume with water. (0.3 mg/mL)
Reference Solution (a) – Related Substances	0.2 % solution of Lisinopril RS in Mobile Phase A
Reference Solution (b) – Related Substances	Dilute 1 mL of Reference Solution (a) – Related Substances to 100 mL with Mobile Phase A (0.02 mg/mL)

**Figure 2.** Reference Solution – Assay

Luna™ 5 µm C8(2) Column

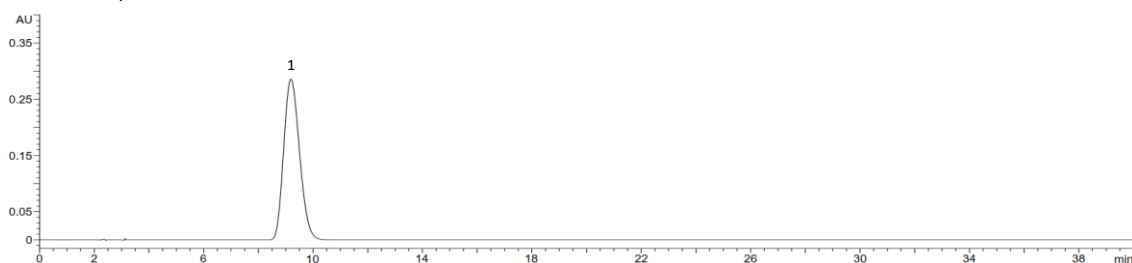


App ID 27248

Peak No.	Analyte	Retention Time (min)	Area	Area %RSD	Tailing Factor	Theoretical Plates
1	Lisinopril	17.64	11571239	0.04	1.11	1303

N = 6 Injections

Kinetex™ 5 µm C8 Column

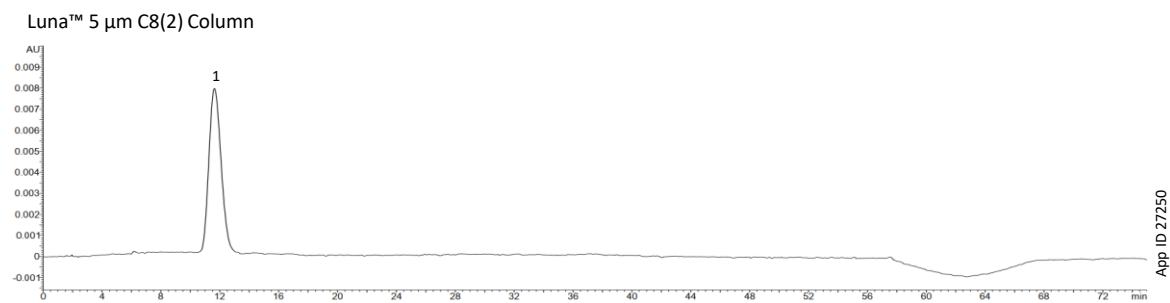


App ID 27249

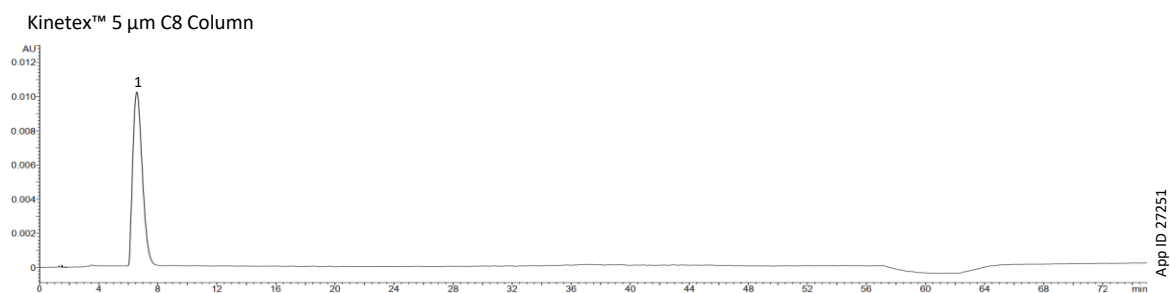
Peak No.	Analyte	Retention Time (min)	Area	Area %RSD	Tailing Factor	Theoretical Plates
1	Lisinopril	9.20	11393656	0.35	1.19	1160

N = 6 Injections



**Figure 3.** Reference Solution (b) – Related Substances

Peak No.	Analyte	Retention Time (min)	Area	Area %RSD	Tailing Factor
1	Lisinopril	11.63	453512	0.30	1.19
N = 6 Injections					



Peak No.	Analyte	Retention Time (min)	Area	Area %RSD	Tailing Factor
1	Lisinopril	6.58	458008	0.13	1.41
N = 6 Injections					



**Need a different column size or sample preparation format?**

No problem! We have a majority of our available dimensions up on [www.phenomenex.com](http://www.phenomenex.com), but if you can't find what you need right away, our super helpful Technical Specialists can guide you to the solution via our online chat portal [www.phenomenex.com/Chat](http://www.phenomenex.com/Chat).

**Australia**

t: +61 (0)2-9428-6444  
auinfo@phenomenex.com

**Austria**

t: +43 (0)1-319-1301  
anfrage@phenomenex.com

**Belgium**

t: +32 (0)2 503 4015 (French)  
t: +32 (0)2 511 8666 (Dutch)  
beinfo@phenomenex.com

**Canada**

t: +1 (800) 543-3681  
info@phenomenex.com

**China**

t: +86 400-606-8099  
cninfo@phenomenex.com

**Czech Republic**

t: +420 272 017 077  
cz-info@phenomenex.com

**Denmark**

t: +45 4824 8048  
nordicinfo@phenomenex.com

**Finland**

t: +358 (0)9 4789 0063  
nordicinfo@phenomenex.com

**France**

t: +33 (0)1 30 09 21 10  
franceinfo@phenomenex.com

**Germany**

t: +49 (0)6021-58830-0  
anfrage@phenomenex.com

**Hong Kong**

t: +852 6012 8162  
hkinfo@phenomenex.com

**India**

t: +91 (0)40-3012 2400  
indiainfo@phenomenex.com

**Indonesia**

t: +62 21 5019 9707  
indoinfo@phenomenex.com

**Ireland**

t: +353 (0)1 247 5405  
eireinfo@phenomenex.com

**Italy**

t: +39 051 6327511  
italiainfo@phenomenex.com

**Japan**

t: +81 (0) 120-149-262  
jpinfo@phenomenex.com

**Luxembourg**

t: +31 (0)30-2418700  
nlinfo@phenomenex.com

**Mexico**

t: 01-800-844-5226  
tecnicomx@phenomenex.com

**The Netherlands**

t: +31 (0)30-2418700  
nlinfo@phenomenex.com

**New Zealand**

t: +64 (0)9-4780951  
nzinfo@phenomenex.com

**Norway**

t: +47 810 02 005  
nordicinfo@phenomenex.com

**Poland**

t: +48 22 104 21 72  
pl-info@phenomenex.com

**Portugal**

t: +351 221 450 488  
ptinfo@phenomenex.com

**Singapore**

t: +65 6559 4364  
sginfo@phenomenex.com

**Slovakia**

t: +420 272 017 077  
sk-info@phenomenex.com

**Spain**

t: +34 91-413-8613  
espinfo@phenomenex.com

**Sweden**

t: +46 (0)8 611 6950  
nordicinfo@phenomenex.com

**Switzerland**

t: +41 (0)61 692 20 20  
swissinfo@phenomenex.com

**Taiwan**

t: +886 (0) 0801-49-1246  
twinfo@phenomenex.com

**Thailand**

t: +66 (0) 2 566 0287  
thaiinfo@phenomenex.com

**United Kingdom**

t: +44 (0)1625-501367  
ukinfo@phenomenex.com

**USA**

t: +1 (310) 212-0555  
[www.phenomenex.com/chat](http://www.phenomenex.com/chat)

🌐 **All other countries/regions**  
**Corporate Office USA**

t: +1 (310) 212-0555  
[www.phenomenex.com/chat](http://www.phenomenex.com/chat)

**www.phenomenex.com**

Phenomenex products are available worldwide. For the distributor in your country/region, contact Phenomenex USA, International Department at [international@phenomenex.com](mailto:international@phenomenex.com)

**BE-HAPPY™**  
GUARANTEE

Your happiness is our mission. Take 45 days to try our products. If you are not happy, we'll make it right.

[www.phenomenex.com/behappy](http://www.phenomenex.com/behappy)

**Terms and Conditions**

Subject to Phenomenex Standard Terms and Conditions, which may be viewed at [www.phenomenex.com/phx-terms-and-conditions-of-sales](http://www.phenomenex.com/phx-terms-and-conditions-of-sales).

**Trademarks**

Luna, Kinetex, and BE-HAPPY are trademarks of Phenomenex. Waters and ACQUITY are registered trademarks of Waters Technologies Corporation.

**Disclaimer**

Comparative separations may not be representative of all applications. Phenomenex is in no way affiliated with Waters Technologies Corporation.

FOR RESEARCH USE ONLY. Not for use in clinical diagnostic procedures.

© 2022 Phenomenex, Inc. All rights reserved.

