

Soft Drink Additives

Column: Synergi[™] 4 μ m Polar-RP 80 \AA , LC Column 250 x 4.6 mm, Ea

Dimensions: 250 x 4.6 mm ID

Order No: 00G-4336-E0

Elution Type: Isocratic

Eluent A: 20 mM Potassium Phosphate, pH 2.3

Eluent B: Methanol

Gradient Profile:	Step No.	Time (min)	Pct A	Pct B
	1	0	55	45

Flow Rate: 1 mL/min

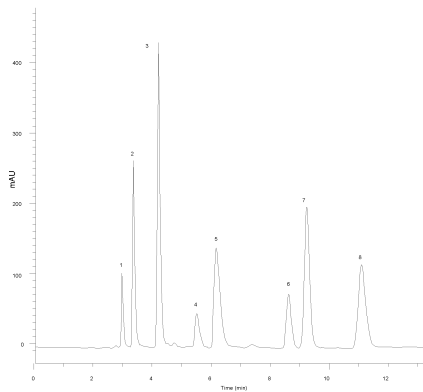
Col. Temp.: ambient

Detection: UV-Vis Abs.-Variable Wave.(UV) @ 220 nm (ambient)

Analyst Note: SecurityGuard[™] Guard Cartridge System extends column lifetime.

- SecurityGuard Cartridges, POLAR-RP 4 x 3.0mm, 10/Pk Part No.: AJ0-6076

- Holder Part No.: KJ0-4282



ANALYTES:

- 1 Ascorbic acid
- 2 Acesulfame-K
- 3 Saccharin
- 4 Aspartame
- 5 Quinine
- 6 Sorbate
- 7 Benzoate
- 8 Caffeine

