

# HPLC Application

ID No.: 13588

## Bendroflumethazide

**Column:** Chirex® (S)-VAL and (R)-NEA, LC Column 250 x 4.6 mm, Ea  
**Dimensions:** 250 x 4.6 mm ID  
**Order No:** 00G-3014-E0  
**Elution Type:** Isocratic  
**Eluent A:** Hexane/Dichloroethane/Ethanol-TFA (58:35:7) w/ ethanol-TFA (20:1)  
**Gradient**

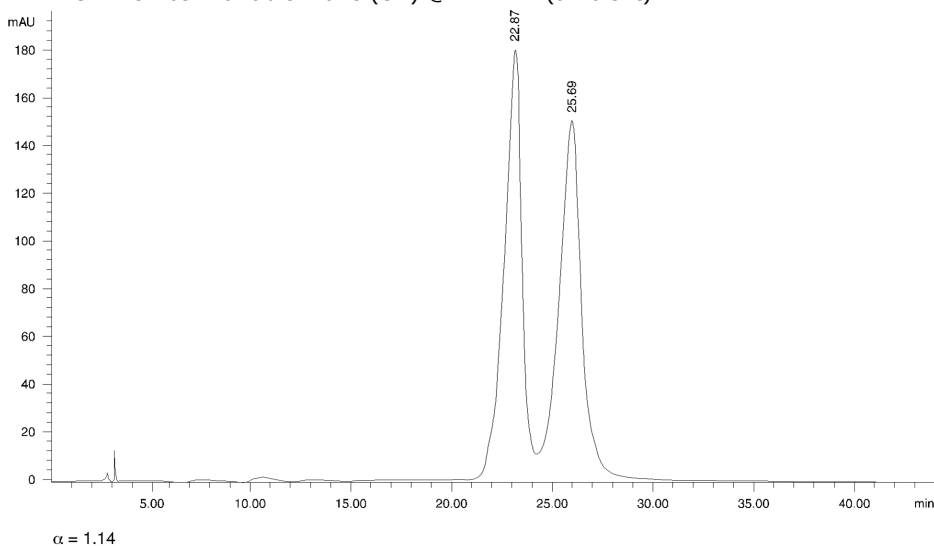
Step No.	Time (min)	Pct A
1	0	100

**Profile:**  
**Flow Rate:** 1 mL/min  
**Col. Temp.:** ambient  
**Detection:** UV-Vis Abs.-Variable Wave.(UV) @ 272 nm (ambient)



Products used in this application:

**CHIREX**®



### ANALYTES:

- 1 Bendroflumethazide  
Retention Time: 22.87 min
- 2 Bendroflumethazide  
Retention Time: 25.69 min

