

HPLC Application

ID No.: 13644

Isoproterenol

Column: Chirex[®] (S)-LEU and (R)-NEA, LC Column 250 x 4.6 mm, Ea

Dimensions: 250 x 4.6 mm ID

Order No: 00G-3020-E0

Elution Type: Isocratic

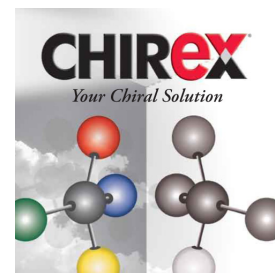
Eluent A: Hexane/Dichloroethane/Ethanol-TFA (55:35:10)

Gradient	Step No.	Time (min)	Pct A
Profile:	1	0	100

Flow Rate: 1 mL/min

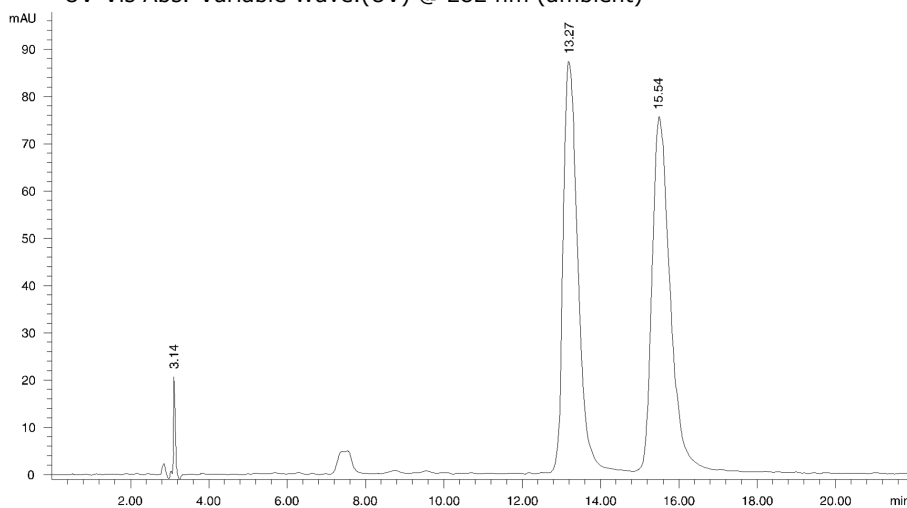
Col. Temp.: ambient

Detection: UV-Vis Abs.-Variable Wave.(UV) @ 282 nm (ambient)



Products used in this application:

CHIREX[®]



$\alpha = 1.21$

ANALYTES:

- 1** Isoproterenol
Retention Time: 3.14 min
- 2** Isoproterenol
Retention Time: 13.27 min
- 3** Isoproterenol
Retention Time: 15.54 min

