

# HPLC Application

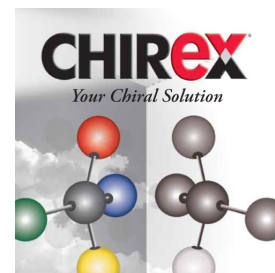
ID No.: 13682

## Primaquine

**Column:** Chirex<sup>®</sup> (S)-VAL and (R)-NEA, LC Column 250 x 4.6 mm, Ea  
**Dimensions:** 250 x 4.6 mm ID  
**Order No:** 00G-3014-E0  
**Elution Type:** Isocratic  
**Eluent A:** Hexane/Dichloroethane/Ethanol-TFA (55:35:10) ethanol/TFA (20:1)  
**Gradient**

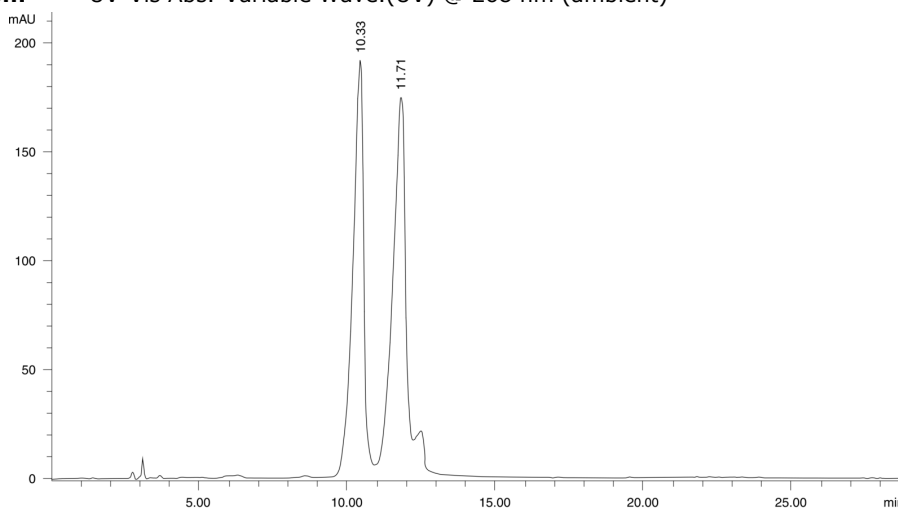
Step No.	Time (min)	Pct A
1	0	100

**Profile:**  
**Flow Rate:** 1 mL/min  
**Col. Temp.:** ambient  
**Detection:** UV-Vis Abs.-Variable Wave.(UV) @ 268 nm (ambient)



Products used in this application:

**CHIREX**<sup>®</sup>



$\alpha = 1.18$

### ANALYTES:

- 1 Primaquine  
Retention Time: 10.33 min
- 2 Primaquine  
Retention Time: 11.71 min

