

# HPLC Application

ID No.: 13686

## Proglumide

**Column:** Chirex<sup>®</sup> (R)-PGLY and DNB, LC Column 250 x 4.6 mm, Ea  
**Dimensions:** 250 x 4.6 mm ID  
**Order No:** 00G-3001-E0  
**Elution Type:** Isocratic  
**Eluent A:** Hexane/Dichloroethane/Ethanol-TFA (55:35:10) w/ethanol-TFA (20:1)  
**Gradient**

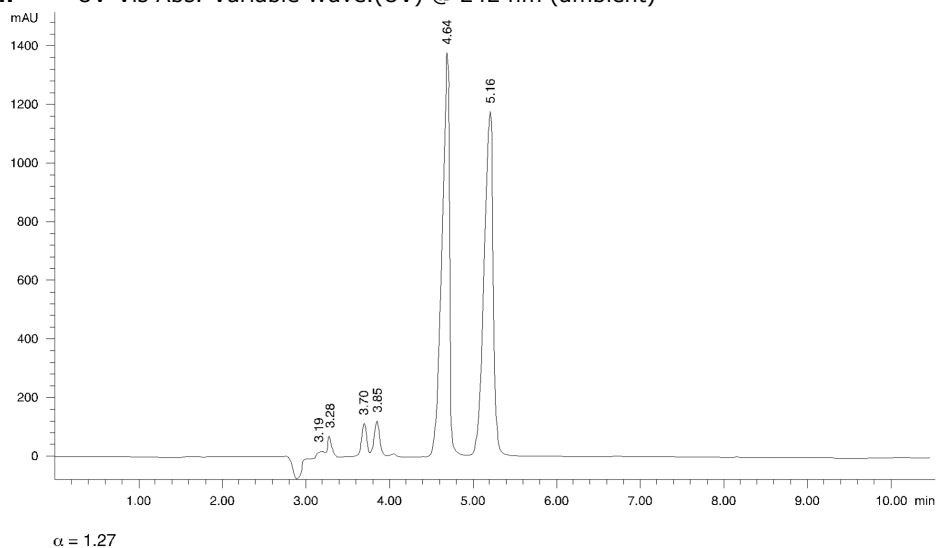
Step No.	Time (min)	Pct A
1	0	100

**Profile:**  
**Flow Rate:** 1 mL/min  
**Col. Temp.:** ambient  
**Detection:** UV-Vis Abs.-Variable Wave.(UV) @ 242 nm (ambient)



Products used in this application:

**CHIREX**<sup>®</sup>



### ANALYTES:

- 1 Proglumide  
Retention Time: 4.64 min
- 2 Proglumide  
Retention Time: 5.16 min

