

# HPLC Application

ID No.: 13745

## Histidine

**Column:** Chirex® 3126 (D)-penicillamine, LC Column 150 x 4.6 mm, Ea

**Dimensions:** 150 x 4.6 mm ID

**Order No:** 00F-3126-E0

**Elution Type:** Isocratic

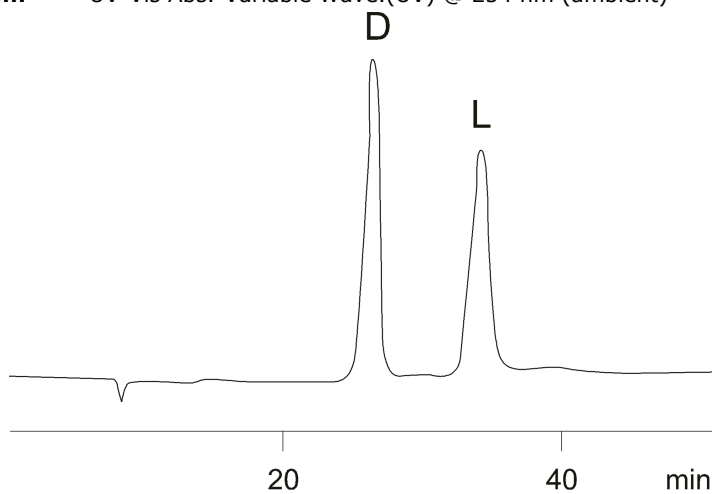
**Eluent A:** 1mM Copper (II) sulfate in water

Gradient	Step No.	Time (min)	Pct A
Profile:	1	0	100

**Flow Rate:** 1 mL/min

**Col. Temp.:** ambient

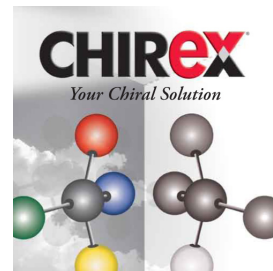
**Detection:** UV-Vis Abs.-Variable Wave.(UV) @ 254 nm (ambient)



$$\alpha = 1.32$$

### ANALYTES:

- 1 D-Histidine
- 2 L-Histidine



Products used in this application:

**CHIREX**®