

HPLC Application

ID No.: 14043

Threonine

Column: Chirex[®] 3126 (D)-penicillamine, LC Column 150 x 4.6 mm, Ea

Dimensions: 150 x 4.6 mm ID

Order No: 00F-3126-E0

Elution Type: Isocratic

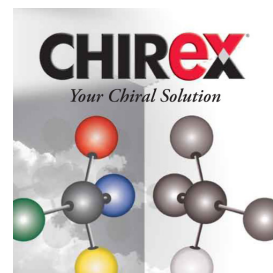
Eluent A: 0.5 mM Copper (II) acetate in water

Gradient	Step No.	Time (min)	Pct A
Profile:	1	0	100

Flow Rate: 0.5 mL/min

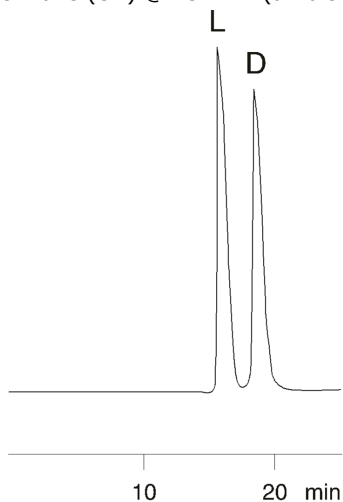
Col. Temp.: ambient

Detection: UV-Vis Abs.-Variable Wave.(UV) @ 254 nm (ambient)



Products used in this application:

CHIREX[®]



$\alpha = 1.20$

ANALYTES:

- 1 L-Threonine
- 2 D-Threonine

