

HPLC Application

ID No.: 14082

Alanylglycyl-glycine

Column: Chirex® 3126 (D)-penicillamine, LC Column 150 x 4.6 mm, Ea

Dimensions: 150 x 4.6 mm ID

Order No: 00F-3126-E0

Elution Type: Isocratic

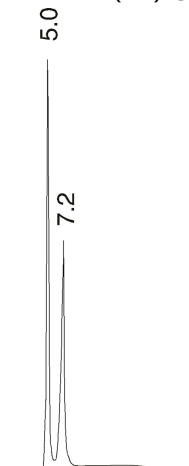
Eluent A: 1 mM Copper (II) sulfate in water

Gradient	Step No.	Time (min)	Pct A
Profile:	1	0	100

Flow Rate: 1 mL/min

Col. Temp.: ambient

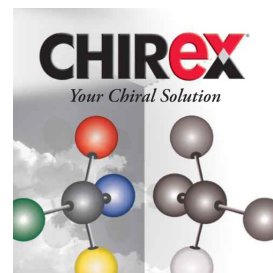
Detection: UV-Vis Abs.-Variable Wave.(UV) @ 254 nm (ambient)



$$\alpha = 1.62$$

ANALYTES:

- 1 Alanylglycyl-glycine
Retention Time: 4.98 min
- 2 Alanylglycyl-glycine
Retention Time: 7.31 min



Products used in this application:

CHIREX®