

HPLC Application

ID No.: 14201

Lactoglobulin tryptic map on Luna C18(2) - 0.025% TFA

Column: Luna® 5 µm C18(2) 100 Å, LC Column 250 x 4.6 mm, Ea

Dimensions: 250 x 4.6 mm ID

Order No: 00G-4252-E0

Elution Type: Gradient

Eluent A: Water with 0.025% TFA

Eluent B: Acetonitrile with 0.025% TFA

Gradient Profile:	Step No.	Time (min)	Pct A	Pct B
	1	0	97	3
	2	3	97	3
	3	90	60	40

Flow Rate: 1 mL/min

Col. Temp.: ambient

Detection: UV-Vis Abs.-Variable Wave.(UV) @ 210 nm (ambient)

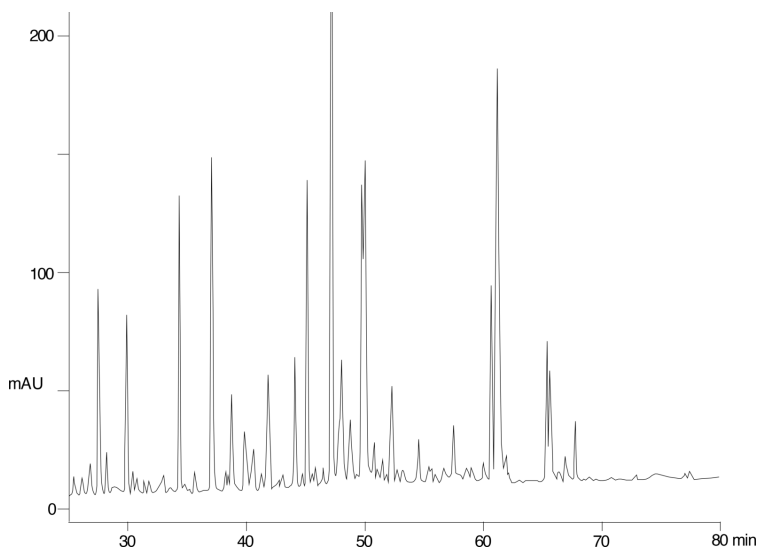
Analyst Note: SecurityGuard™ Guard Cartridge System extends column lifetime.

- SecurityGuard Cartridges, C18 4 x 3.0mm, 10/Pk Part No.: AJ0-4287

- Holder Part No.: KJ0-4282



Products used in this application:



ANALYTES:

- 1 Protein (tryptic digest map)

