

# HPLC Application

ID No.: 14269

## EPA Method 8310 - PAH's on Luna C18(2)

**Column:** Luna® 5 µm C18(2) 100 Å, LC Column 250 x 4.6 mm, Ea

**Dimensions:** 250 x 4.6 mm ID

**Order No:** 00G-4252-E0

**Elution Type:** Gradient

**Eluent A:** Water

**Eluent B:** Acetonitrile

Gradient Profile:	Step No.	Time (min)	Pct A	Pct B
	1	0	25	75
	2	25	0	100

**Flow Rate:** 2 mL/min

**Col. Temp.:** ambient

**Detection:** UV-Vis Abs.-Variable Wave.(UV) @ 254 nm (ambient)

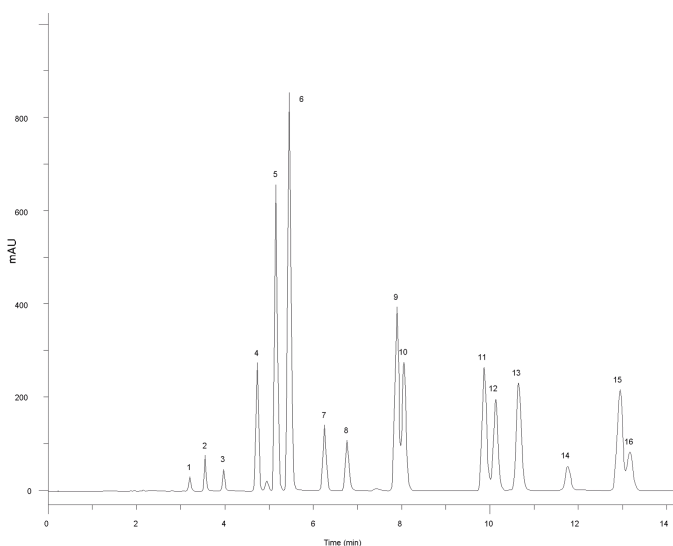
**Analyst Note:** SecurityGuard™ Guard Cartridge System extends column lifetime.

- SecurityGuard Cartridges, C18 4 x 3.0mm, 10/Pk Part No.: AJ0-4287

- Holder Part No.: KJ0-4282



Products used in this application:



## EPA Method 8310 - PAH's on Luna C18(2)

### ANALYTES:

- 1 Naphthalene
- 2 Acenaphthylene
- 3 Fluorene
- 4 Phenanthrene
- 5 Anthracene
- 6 Fluoranthene
- 7 Pyrene
- 8 Benz[a]anthracene
- 9 Chrysene
- 10 Benzo[e]pyrene
- 11 Benzo[b]fluoranthene
- 12 Benzo[k]fluoranthene
- 13 Benzo[a]pyrene
- 14 Dibenz[a,h]anthracene
- 15 Benzo[g,h,i]perylene
- 16 Indeno[1,2,3-cd]pyrene

