

## Peptide Comparison - Jupiter Proteo

**Column:** Jupiter® 4 µm Proteo 90 Å, LC Column 250 x 4.6 mm, Ea

**Dimensions:** 250 x 4.6 mm ID

**Order No:** 00G-4396-E0

**Elution Type:** Gradient

**Eluent A:** 0.01%TFA in Water

**Eluent B:** 0.008% TFA in Acetonitrile

Gradient Profile:	Step No.	Time (min)	Pct A	Pct B
	1	0	95	5
	2	20	60	40

**Flow Rate:** 1 mL/min

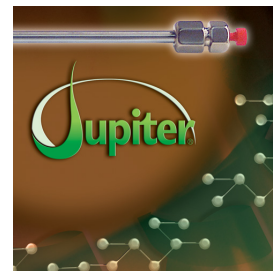
**Col. Temp.:** ambient

**Detection:** UV-Vis Abs.-Variable Wave.(UV) @ 210 nm (ambient)

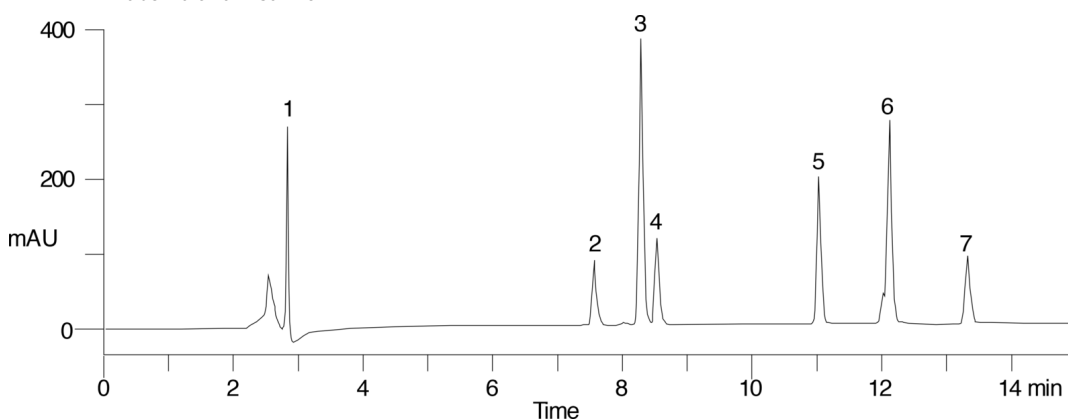
**Analyst Note:** SecurityGuard™ Guard Cartridge System extends column lifetime.

- SecurityGuard Cartridges, C12 4 x 3.0mm, 10/Pk Part No.: AJ0-6074

- Holder Part No.: KJ0-4282



Products used in this application:



### ANALYTES:

- 1 Angiotensinogen fragment 11-14 (Val-Ile-His-Asn)
- 2 [sar1, val5, ala8] Angiotensin II
- 3 [sar1, thr8]-Angiotensin II
- 4 [sar1, ala8]-Angiotensin II
- 5 [asn1, val5]-Angiotensin II
- 6 [sar1]-Angiotensin II
- 7 Angiotensin I (from salmon)

