

Peptides on Jupiter Proteo

Column: Jupiter® 4 µm Proteo 90 Å, LC Column 250 x 4.6 mm, Ea

Dimensions: 250 x 4.6 mm ID

Order No: 00G-4396-E0

Elution Type: Gradient

Eluent A: 0.1% TFA in Water

Eluent B: 0.08% TFA in Acetonitrile

Gradient Profile:	Step No.	Time (min)	Pct A	Pct B
	1	0	95	5
	2	20	60	40

Flow Rate: 1 mL/min

Col. Temp.: ambient

Detection: UV-Vis Abs.-Variable Wave.(UV) @ 210 nm (ambient)

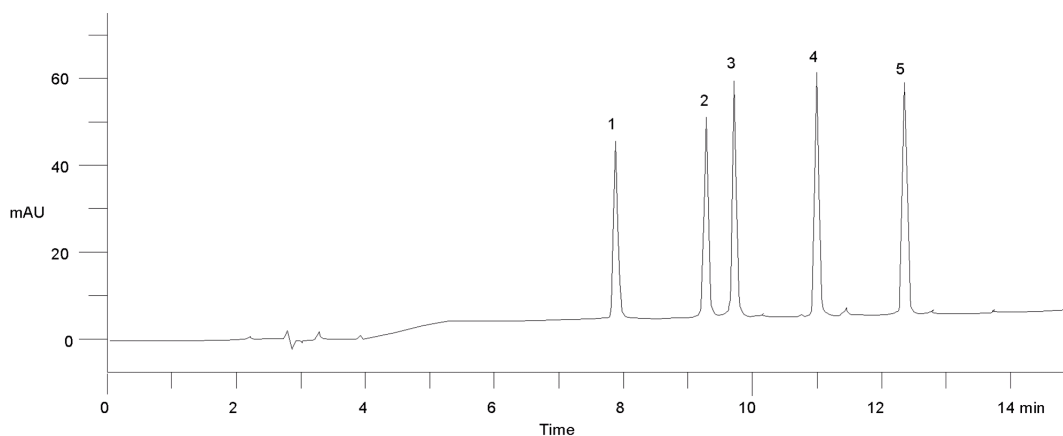
Analyst Note: SecurityGuard™ Guard Cartridge System extends column lifetime.

- SecurityGuard Cartridges, C12 4 x 3.0mm, 10/Pk Part No.: AJ0-6074

- Holder Part No.: KJ0-4282



Products used in this application:



ANALYTES:

- 1 Arg-Gly-Ala-Gly-Gly-Leu-Gly-Leu-Gly-Lys-amide
- 2 Ac-Arg-Gly-Gly-Gly-Gly-Leu-Gly-Leu-Gly-Lys-amide
- 3 Ac-Arg-Gly-Ala-Gly-Gly-Leu-Gly-Leu-Gly-Lys-amide
- 4 Ac-Arg-Gly-Val-Gly-Gly-Leu-Gly-Leu-Gly-Lys-amide
- 5 Ac-Arg-Gly-Val-Val-Gly-Leu-Gly-Leu-Gly-Lys-amide

