

HPLC Application

ID No.: 14455

Extraction of Fenopropfen on Strata™ X

Column: Luna® 5 µm C8(2) 100 Å, LC Column 150 x 4.6 mm, Ea

Dimensions: 150 x 4.6 mm ID

Order No: 00F-4249-E0

Elution Type: Isocratic

Eluent A: 0.05% H₃PO₄ (pH 2.3)

Eluent B: ACN

Gradient Profile:	Step No.	Time (min)	Pct A	Pct B
	1	0	50	50

Flow Rate: 1.5 mL/min

Col. Temp.: ambient

Detection: UV-Vis Abs.-Fixed Wave. (UV) @ 230 nm (25 °C)

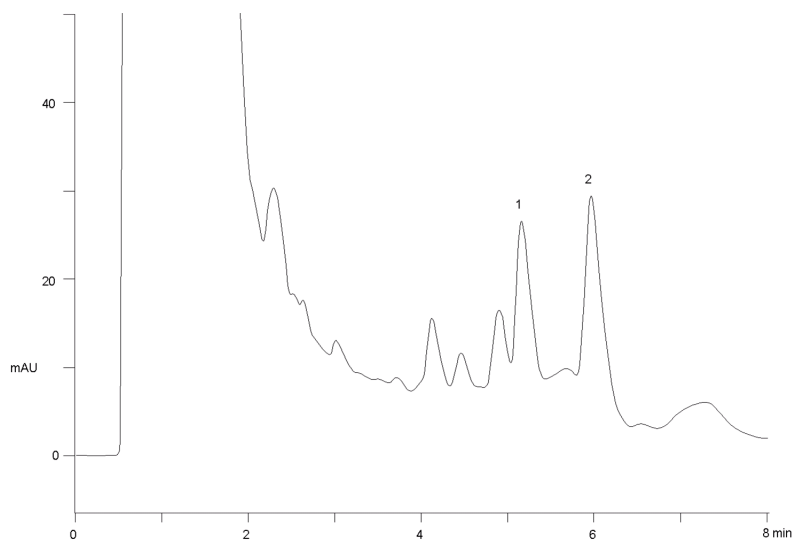
Analyst Note: SecurityGuard™ Guard Cartridge System extends column lifetime.

- SecurityGuard Cartridges, C8 4 x 3.0mm, 10/Pk Part No.: AJ0-4290

- Holder Part No.: KJ0-4282



Products used in this application:



ANALYTES:

- 1 Fenopropfen
- 2 Indomethacine (internal standard)



Sample Preparation Details

for HPLC Application ID No.: 14455

Extraction of Fenoprofen on Strata™ X

PRODUCT DESCRIPTION:

Strata™-X 33 µm Polymeric Reversed Phase, 30 mg / 1 mL, Tubes , 100/Pk

Order No.: 8B-S100-TAK

SOLID PHASE EXTRACTION (SPE) PROCEDURE:

Note: The solvent volumes shown below are for a 30 mg bed mass.

The solvent volumes will need to be adjusted for a smaller or larger bed mass.

Condition:

Load:

Load: 1 ml of analyte and internal standard (1.0 ug/ml) spiked Porcine serum acidified with 2% conc. H₃PO₄ .
(Dilute the serum spiked analyte 1: 1 with buffer or water as needed)

Wash:

Dry:

1 min at 10" of Hg pressure

Elute:

Final Prep and Analysis:

Inject: 50 µL on HPLC UV-Vis Abs.-Fixed Wave. (UV) @ 230 nm (25°C)

ANALYTES:	Spiked Conc. (ng/mL)	Log P	pKa	% Rec	%RSC (n=0)
1 Fenoprofen	1			102	
2 Indomethacine	1			99	

Note: This method is designed as a convenient starting point for further investigation and can be tailored to meet your extraction goals.
Call your local Phenomenex Representative for assistance in method development and optimization techniques.

©2019 Phenomenex Inc. All rights reserved.

For more information contact your Phenomenex Representative at info@phenomenex.com



Phenomenex products are available worldwide.

www.phenomenex.com

info@phenomenex.com