

HPLC Application

ID No.: 14516

Basic Drugs - Luna C8(2)

Column: Luna® 5 µm C8(2) 100 Å, LC Column 150 x 4.6 mm, Ea

Dimensions: 150 x 4.6 mm ID

Order No: 00F-4249-E0

Elution Type: Isocratic

Eluent A: 20 mM KH₂PO₄, pH 7.0

Eluent B: Methanol

| Gradient Profile: | Step No. | Time (min) | Pct A | Pct B |
|-------------------|----------|------------|-------|-------|
| | 1 | 0 | 10 | 90 |

Flow Rate: 1 mL/min

Col. Temp.: ambient

Detection: UV-Vis Abs.-Variable Wave.(UV) @ 254 nm (ambient)

Analyst Note: SecurityGuard™ Guard Cartridge System extends column lifetime.

- SecurityGuard Cartridges, C8 4 x 3.0mm, 10/Pk Part No.: AJ0-4290

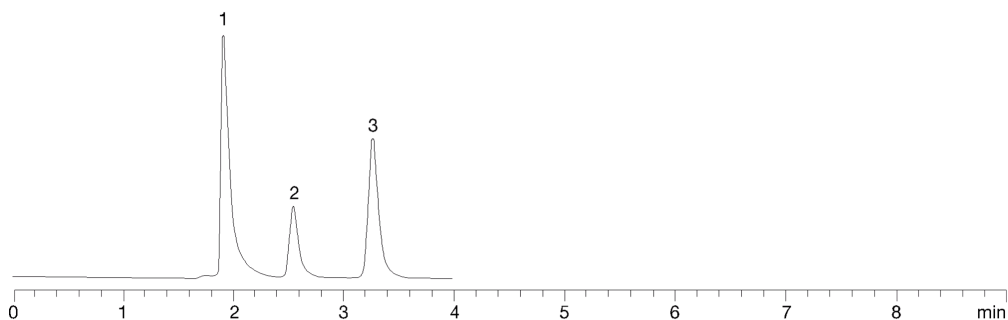
- Holder Part No.: KJ0-4282



Products used in this application:



14516



ANALYTES:

- 1 Diphenhydramine
- 2 Amitriptyline
- 3 Berberine

