

# GC Application

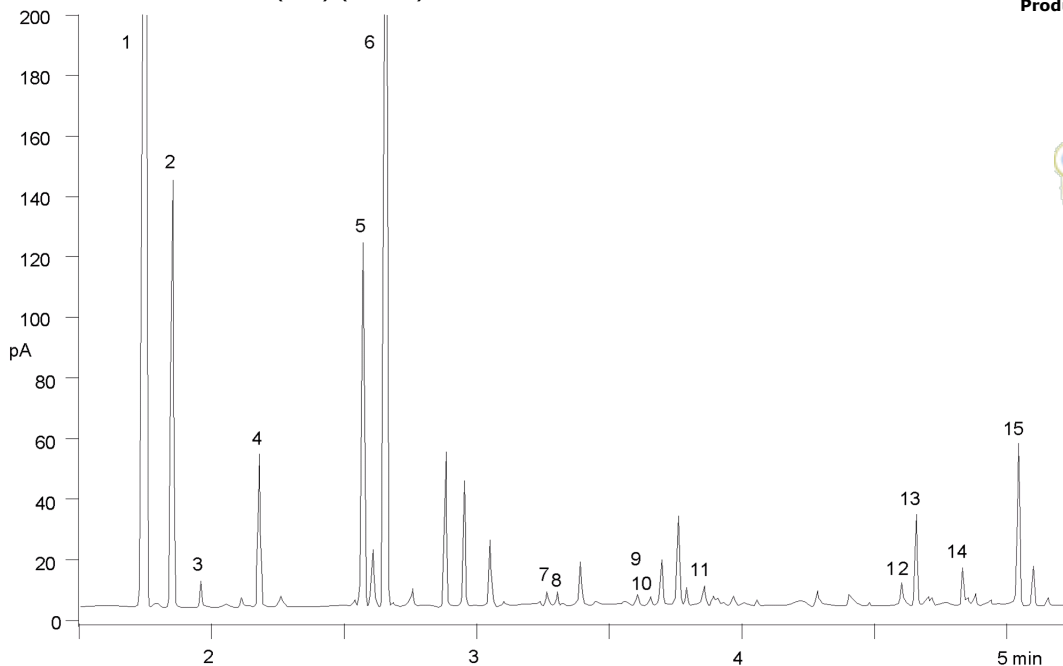
ID No.: 14607

## EZ:faast analysis of Fermentation Broth

**Column:** EZ:faast<sup>™</sup> GC-FID Physiological, Amino Acid Analysis Kit, Ea  
**Phase:** Proprietary Amino Acid Phase  
**Dimensions:** 0 meters x 0 mm x 0  $\mu$ m  
**Order No:** KG0-7165  
**Oven Profile:** 30°C/min from 110° to 320°C, hold at 320°C for 1 minute



**Carrier Gas:** Helium, 1.5 mL/min  
**Injection:** HOT NEEDLE INJECTION :1 2  $\mu$ L @ 250°C  
**Detection:** Flame Ionization (FID) (320°C)



Products used in this application:



## EZ:faast analysis of Fermentation Broth

### ANALYTES:

- 1 ALA
- 2 GLY
- 3 ABA
- 4 internal standard
- 5 SER
- 6 PRO
- 7 ASP
- 8 MET
- 9 GLU
- 10 PHE
- 11 AAA
- 12 ORN
- 13 GPR
- 14 LYS
- 15 HIS

