

HPLC Application

ID No.: 14682

Tryptic Digests of three genetic variants of cytochrome c proteins on Jupiter Proteo LC column

Column: Jupiter[®] 4 μ m Proteo 90 \AA , LC Column 250 x 4.6 mm, Ea

Dimensions: 250 x 4.6 mm ID

Order No: 00G-4396-E0

Elution Type: Gradient

Eluent A: 0.12% TFA in water

Eluent B: 0.10% TFA in MeCN

Gradient Profile:	Step No.	Time (min)	Pct A	Pct B
	1	0	95	5
	2	50	45	55
	3	55	5	95
	4	60	95	5
	5	65	95	5

Flow Rate: 1 mL/min

Col. Temp.: ambient

Detection: UV-Vis Abs.-Variable Wave.(UV) @ 210 nm (25 °C)

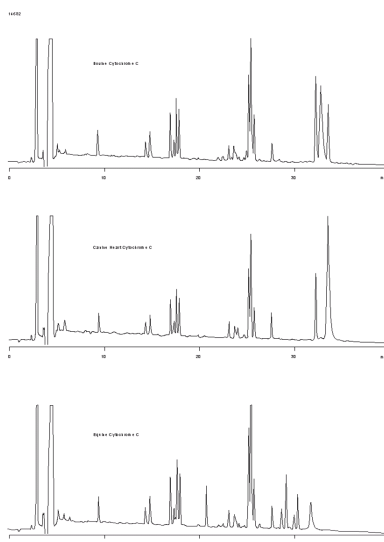
Analyst Note: SecurityGuard[™] Guard Cartridge System extends column lifetime.

- SecurityGuard Cartridges, C12 4 x 3.0mm, 10/Pk Part No.: AJ0-6074

- Holder Part No.: KJ0-4282



Products used in this application:



ANALYTES:

- 1 Bovine Cytochrome c
- 2 Canine Heart Cytochrome c
- 3 Equine Cytochrome c

