

# GC Application

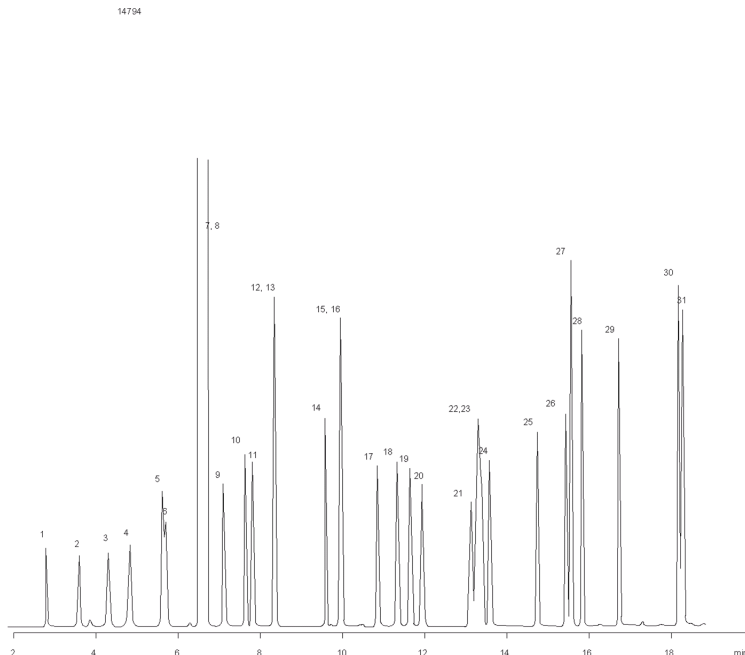
ID No.: 14794

## Alcohols on ZB-624 30x.53x3.0

**Column:** Zebron<sup>™</sup> ZB-624, GC Cap. Column 30 m x 0.53 mm x 3.00  $\mu$ m, Ea  
**Phase:** 6% Cyanopropylphenyl 94% Dimethylpolysiloxane  
**Dimensions:** 30 meters x 0.53 mm x 3  $\mu$ m  
**Order No:** 7HK-G005-36  
**Oven Profile:** 50°C for 4 min. to 130°C at 14°C/min. for 3 min. to 200°C at 15°C/min. for 1.5 min.  
**Carrier Gas:** Constant Flow Helium, 1.8 mL/min  
**Injection:** Split 20:1 1  $\mu$ L @ 225°C  
**Detection:** Flame Ionization (FID) (350°C)  
**Analyst Note:** All analytes were 16ng on column except decanol at 32ng.



Products used in this application:



## Alcohols on ZB-624 30x.53x3.0

### ANALYTES:

- 1 Methanol
- 2 Ethanol
- 3 Isopropanol
- 4 tert-Butanol
- 5 Allyl alcohol (2-Propen-1-ol)
- 6 Propanol
- 7 sec-Butanol
- 8 Chloroform
- 9 2-Methylpropanol
- 10 Methallyl alcohol
- 11 Butanol
- 12 3-Pentanol
- 13 2-Pentanol
- 14 Pentanol
- 15 3-Hexanol
- 16 Cyclopentanol
- 17 2-Ethyl-1-butanol
- 18 Hexanol
- 19 4-Heptanol
- 20 Cyclohexanol
- 21 2-Methylcyclohexanol
- 22 3-Methylcyclohexanol
- 23 4-Methylcyclohexanol
- 24 Heptanol
- 25 2-Ethyl-1-hexanol
- 26 Octanol
- 27 Phenylmethanol
- 28 Phenylethanol
- 29 2-Phenylethanol
- 30 Decanol
- 31 3-Phenyl-1-propanol

