

## Industrial Solvents on ZB-624 60x0.32x1.8

**Column:** Zebron™ ZB-624, GC Cap. Column 60 m x 0.32 mm x 1.80 µm, Ea

**Phase:** 6% Cyanopropylphenyl 94% Dimethylpolysiloxane

**Dimensions:** 60 meters x 0.32 mm x 1.8 µm

**Order No:** 7KM-G005-31

**Oven Profile:** 40°C for 8 min. to 90°C at 8°C/min. to 210°C at 15°C for 8 min

**Carrier Gas:** Constant Flow Helium, 1 mL/min

**Injection:** Split 20:1 0.6 µL @ 220°C

**Detection:** Mass Selective (MSD) (180°C)

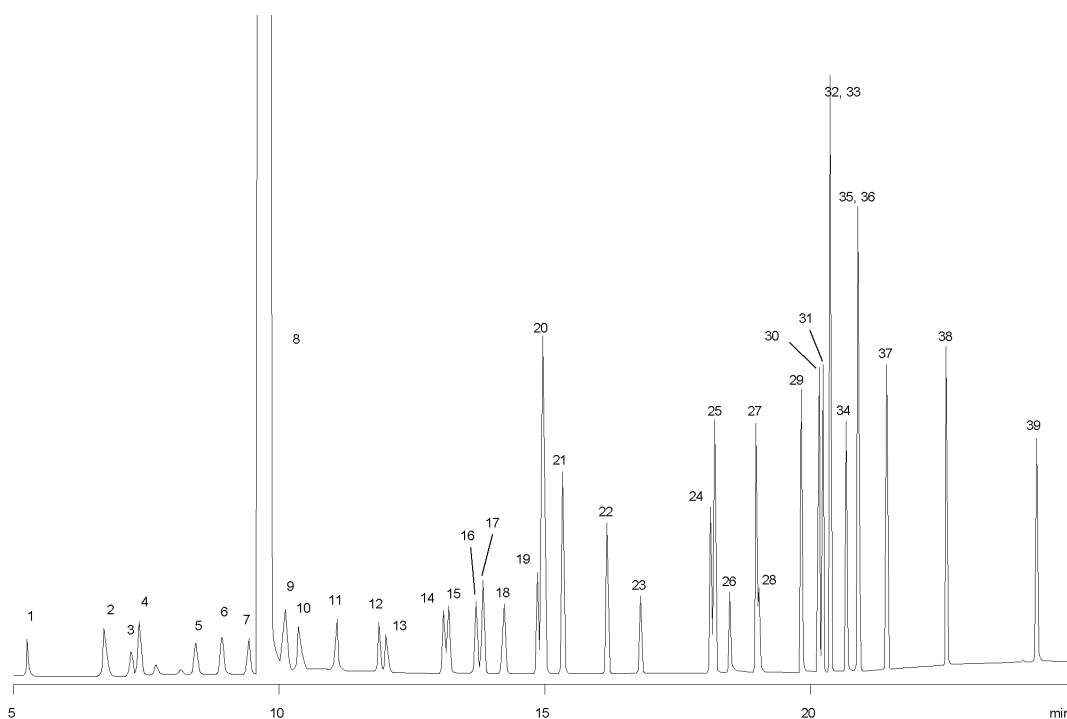
**Analyst Note:** All analytes were 140ng on column except methylene chloride as the solvent.



Products used in this application:



14807



## Industrial Solvents on ZB-624 60x0.32x1.8

### ANALYTES:

- 1 Methanol
- 2 Pentane
- 3 Ethanol
- 4 Ether
- 5 Acetone
- 6 Isopropanol
- 7 Acetonitrile
- 8 Methylene chloride (solvent)
- 9 tert-Butanol
- 10 Methyl tert-butyl ether (MTBE)
- 11 Hexane
- 12 Allyl alcohol
- 13 n-Propanol
- 14 Methyl ethyl ketone (MEK)
- 15 Ethyl acetate
- 16 Tetrahydrofuran (THF)
- 17 Chloroform
- 18 Cyclohexane
- 19 1,2-Dimethoxyethane
- 20 Benzene
- 21 Heptane
- 22 Trichloroethylene
- 23 1,4-Dioxane
- 24 Pyridine
- 25 Toluene
- 26 Ethylene glycol
- 27 Tetrachloroethylene
- 28 Formamide
- 29 N,N-Dimethylformamide
- 30 Chlorobenzene
- 31 Ethylbenzene
- 32 m-Xylene
- 33 p-Xylene
- 34 3-Picoline
- 35 o-Xylene
- 36 Styrene
- 37 Anisole
- 38 Benzaldehyde
- 39 N-Methylpyrrolidone

