

GC Application

ID No.: 14901

BTEX ZB1 100x0.25x0.5

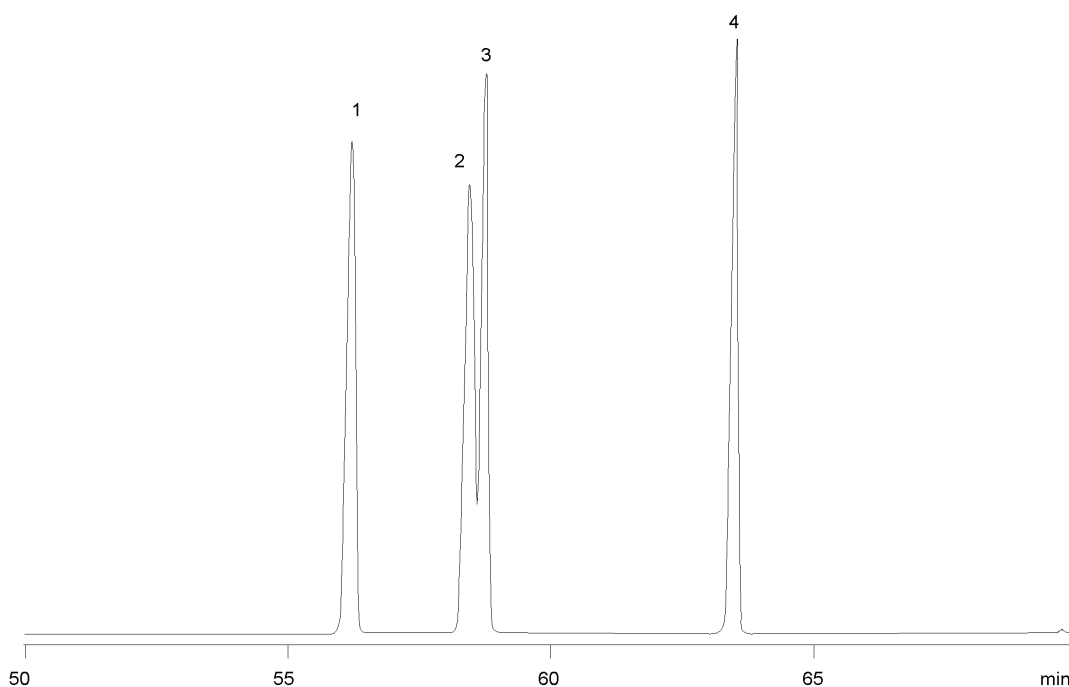
Column: Zebron[™] ZB-1, GC Cap. Column 100 m x 0.25 mm x 0.50 μ m, Ea
Phase: 100% Dimethylpolysiloxane
Dimensions: 100 meters x 0.25 mm x 0.5 μ m
Order No: 7MG-G001-17
Oven Profile: 35°C for 14 min to 60°C at 1.1°C/min for 19 min to 280°C at 2°C/min for 5 min.
Carrier Gas: Constant Flow Helium, 1.4 mL/min
Injection: Split 20:1 0.2 μ L @ 225°C
Detection: Flame Ionization (FID) (300°C)
Analyst Note: Portion of BTEX solution chromatogram showing near full resolution of para- and meta-xylene.



Products used in this application:



14901



ANALYTES:

- 1 Ethylbenzene
- 2 m-Xylene
- 3 p-Xylene
- 4 o-Xylene

