

# HPLC Application

ID No.: 14908

## IgG\_Dog (Native) Jupiter 300 C4

**Column:** Jupiter<sup>®</sup> 5  $\mu$ m C4 300 Å, LC Column 150 x 2 mm, Ea

**Dimensions:** 150 x 2 mm ID

**Order No:** 00F-4167-B0

**Elution Type:** Gradient

**Eluent A:** 0.1%TFA/95% Water/ 5% Acetonitrile

**Eluent B:** 0.085% TFA/75% Acetonitrile/ 20% IPA/5% Water

Gradient Profile:	Step No.	Time (min)	Pct A	Pct B
	1	0	80	20
	2	20	10	90

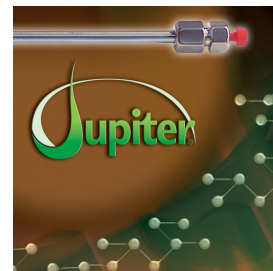
**Flow Rate:** 0.25 mL/min

**Col. Temp.:** ambient

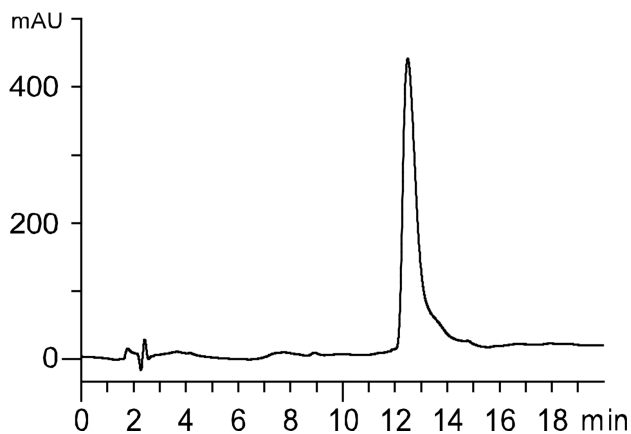
**Detection:** UV-Vis Abs.-Diode Array (PDA) @ nm (ambient)

**Analyst Note:** These applications demonstrate the utility of using low amounts of isopropanol in the organic mobile phase to improve peak shape of hydrophobic proteins. App ID#14918 shows the elution of IgG on a Jupiter 300 C4 column where Acetonitrile is used as the organic mobile phase. App ID#14908 shows the elution of IgG on a Jupiter 300 C4 column where Acetonitrile and Isopropanol are used as the organic mobile phase.

AppID 14908



Products used in this application:



### ANALYTES:

- 1 IgG (from dog)

