

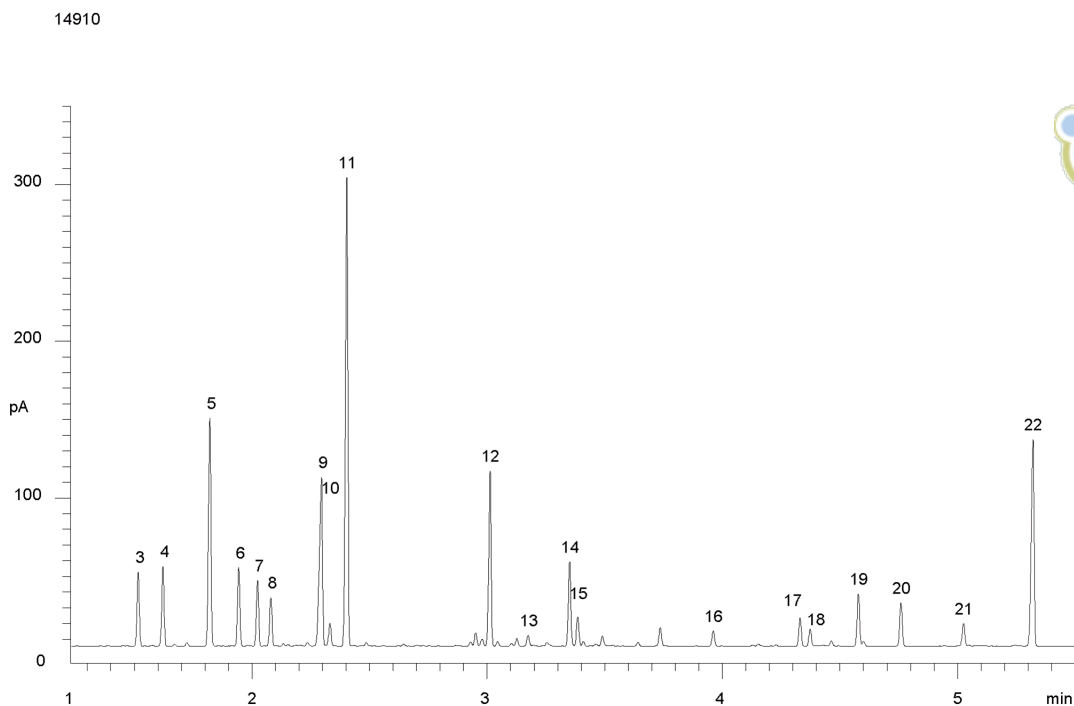
## EZ:faast analysis of Cell Culture

**Column:** EZ:faast<sup>™</sup> GC-FID Physiological, Amino Acid Analysis Kit, Ea  
**Phase:** Proprietary Amino Acid Phase  
**Dimensions:** 0 meters x 0 mm x 0  $\mu$ m  
**Order No:** KG0-7165  
**Oven Profile:** 30°C/min from 110° to 320°C, hold at 320°C for 1 minute

**Carrier Gas:** Constant Flow Helium, 1.5 mL/min  
**Injection:** Split 15:1 2  $\mu$ L @ 250°C  
**Detection:** Flame Ionization (FID) (320°C)



Products used in this application:



## EZ:faast analysis of Cell Culture

### ANALYTES:

- 1 ALA
- 2 GLY
- 3 VAL
- 4 NORVALINE
- 5 LEU
- 6 ILE
- 7 THR
- 8 SER
- 9 PRO
- 10 ASP
- 11 HYP
- 12 GLU
- 13 PHE
- 14 GLN
- 15 ORN
- 16 GPR
- 17 LYS
- 18 HIS
- 19 TYR
- 20 TRP

