

Jupiter C4 P2_1

Column: Jupiter® 5 µm C4 300 Å, LC Column 250 x 2 mm, Ea

Dimensions: 250 x 2 mm ID

Order No: 00G-4167-B0

Elution Type: Gradient

Eluent A: 0.1%TFA in 95:5 Water/ACN

Eluent B: 60:40 ACN/MeOH

Gradient Profile:	Step No.	Time (min)	Pct A	Pct B
	1	0	80	20
	2	15	15	85

Flow Rate: 0.27 mL/min

Col. Temp.: ambient

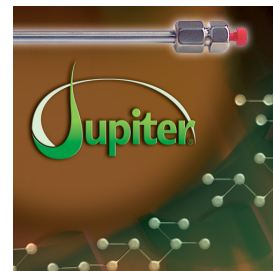
Detection: UV-Vis Abs.-Diode Array (PDA) @ 220 nm (ambient)

Analyst Note: SecurityGuard™ Guard Cartridge System extends column lifetime.

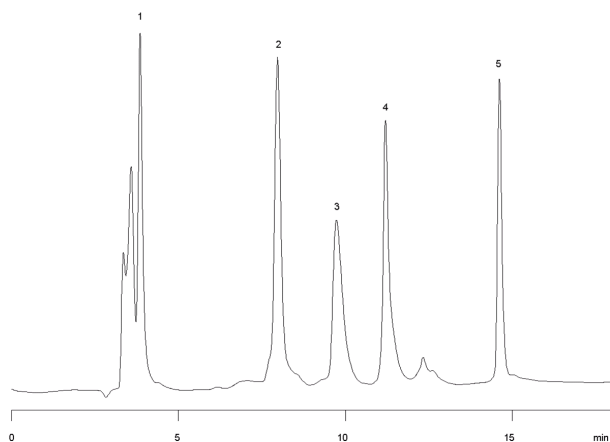
- SecurityGuard Cartridges, Widedpore C4 4 x 2.0mm, 10/Pk Part No.: AJ0-4329

- Holder Part No.: KJ0-4282

14935



Products used in this application:



ANALYTES:

- 1** Aprotinin
Retention Time: 3.85 min
- 2** Ribonuclease
Retention Time: 7.96 min
- 3** Fibrinogen
Retention Time: 9.73 min
- 4** Acid glycoprotein
Retention Time: 11.2 min
- 5** Leptin
Retention Time: 14.61 min

