

# HPLC Application

ID No.: 14974

## Carbohydrates analysis using Rezex RAM

**Column:** Rezex<sup>™</sup> RAM-Carbohydrate Ag+ (8%), LC Column 300 x 7.8 mm, Ea

**Dimensions:** 300 x 7.8 mm ID

**Order No:** 00H-0131-K0

**Elution Type:** Isocratic

**Eluent A:** Water

Gradient	Step No.	Time (min)	Pct A
<b>Profile:</b>	<b>1</b>	<b>0</b>	<b>100</b>

**Flow Rate:** 0.6 mL/min

**Col. Temp.:** 80 °C

**Detection:** Evaporative Light Scattering @ nm (ambient)

**Analyst Note:** SecurityGuard<sup>™</sup> Guard Cartridge System extends column lifetime.

- SecurityGuard Cartridges, Carbo-Ag 4 x 3.0mm, 10/Pk Part No.: AJ0-4491

- Holder Part No.: KJ0-4282

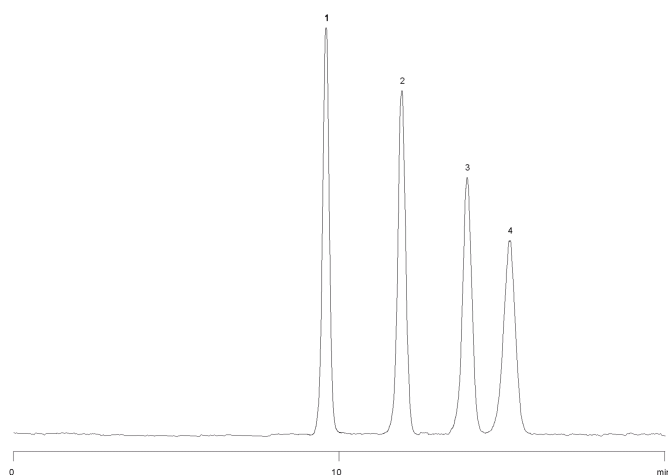
14974

**REZEX**<sup>™</sup>  
HPLC COLUMNS for Carbohydrates, Oligosaccharides, and Organic Acid Analysis



Products used in this application:

**REZEX**<sup>™</sup>



### ANALYTES:

- 1 Sucrose
- 2 Glucose
- 3 Arabinose
- 4 Ribose

