

HPLC Application

ID No.: 14989

Fermentation sample #3 using Rexex RCM

Column: Rezex[™] RCM-Monosaccharide Ca+2 (8%), LC Column 300 x 7.8 mm, Ea

Dimensions: 300 x 7.8 mm ID

Order No: 00H-0130-K0

Elution Type: Isocratic

Eluent A: Water

Gradient	Step No.	Time (min)	Pct A
Profile:	1	0	100

Flow Rate: 0.5 mL/min

Col. Temp.: 80 °C

Detection: Evaporative Light Scattering @ nm (ambient)

Analyst Note: SecurityGuard[™] Guard Cartridge System extends column lifetime.

- SecurityGuard Cartridges, Carbo-Ca 4 x 3.0mm, 10/Pk Part No.: AJ0-4493

- Holder Part No.: KJ0-4282

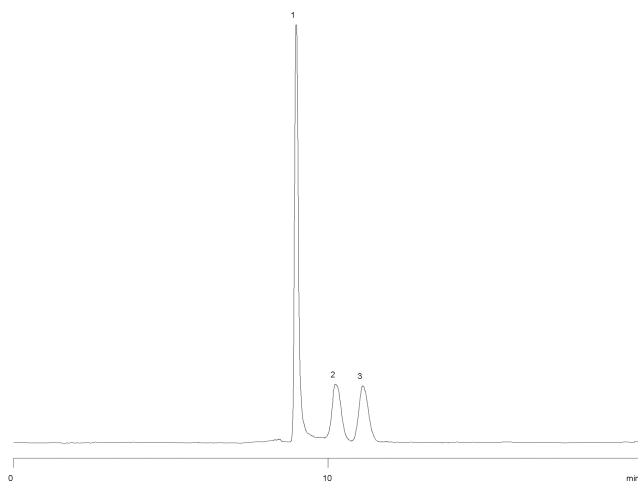
REZEX[™]
HPLC COLUMNS for Carbohydrates, Oligosaccharides, and Organic Acid Analysis



Products used in this application:

REZEX[™]

14989



ANALYTES:

- 1 Sucrose
- 2 Glucose
- 3 Galactose
- 4 Fructose

