

GC Application

ID No.: 15427

Alcohols ZB5ms 30x0.25x0.5

Column: Zebtron[™] ZB-5MS, GC Cap. Column 30 m x 0.25 mm x 0.50 µm, Ea

Phase: 5% Phenyl-Arylene 95% Dimethylpolysiloxane

Dimensions: 30 meters x 0.25 mm x 0.5 µm

Order No: 7HG-G010-17

Oven Profile: 35°C for 4 min to 100°C at 10°C/min to 250°C at 25°C/min

Carrier Gas: Constant Flow Helium, 1.4 mL/min

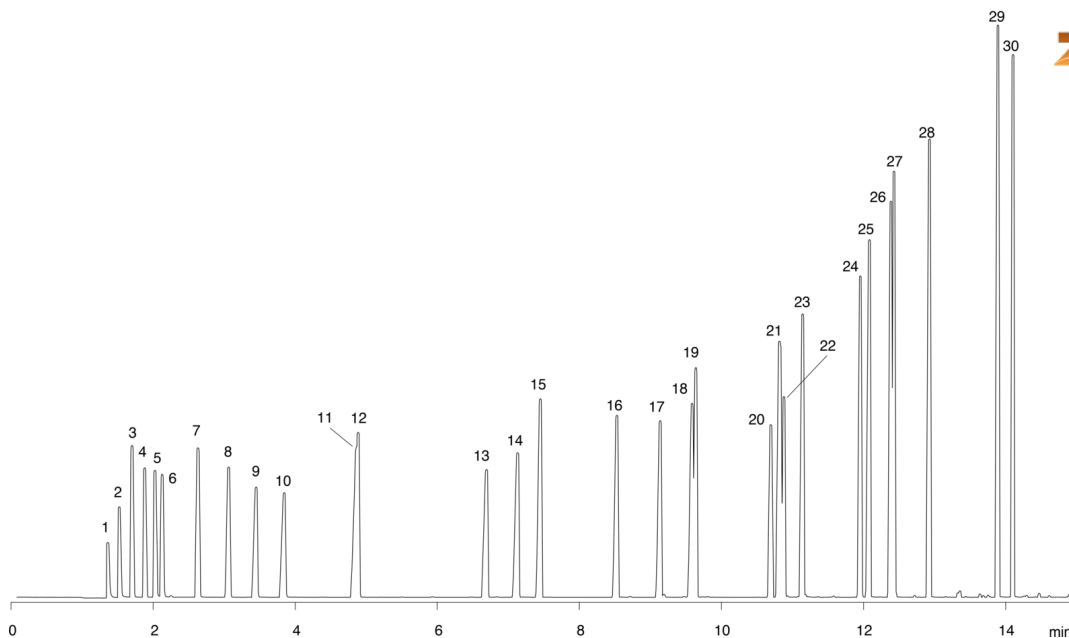
Injection: Split 150:1 0.2 µL @ 200°C

Detection: Mass Selective (MSD) (240°C)

15427



Products used in this application:



Alcohols ZB5ms 30x0.25x0.5

ANALYTES:

- 1 Methanol
- 2 Ethanol
- 3 Isopropanol
- 4 tert-Butanol
- 5 Allyl alcohol
- 6 n-Propanol
- 7 2-Butanol
- 8 2-Methyl-1-propanol
- 9 Methallyl alcohol
- 10 n-Butanol
- 11 2-Pentanol
- 12 3-Pentanol
- 13 1-Pentanol
- 14 Cyclopentanol
- 15 3-Hexanol
- 16 2-Ethylbutanol
- 17 n-Hexanol
- 18 Cyclohexanol
- 19 4-Heptanol
- 20 2-Methylcyclohexanol
- 21 3-Methylcyclohexanol
- 22 4-Methylcyclohexanol
- 23 n-Heptanol
- 24 2-Ethylhexanol
- 25 Benzyl alcohol (Benzenemethanol)
- 26 Phenylethanol
- 27 n-Octanol
- 28 2-Phenylethanol
- 29 Benzenepropanol
- 30 n-Decanol

