

HPLC Application

ID No.: 15478

Sweeteners on Onyx C18

Column: Onyx™ Monolithic C18, LC Column 50 x 4.6 mm, Ea

Dimensions: 50 x 4.6 mm ID

Order No: CH0-7644

Elution Type: Gradient

Eluent A: 0.1% TFA in Water

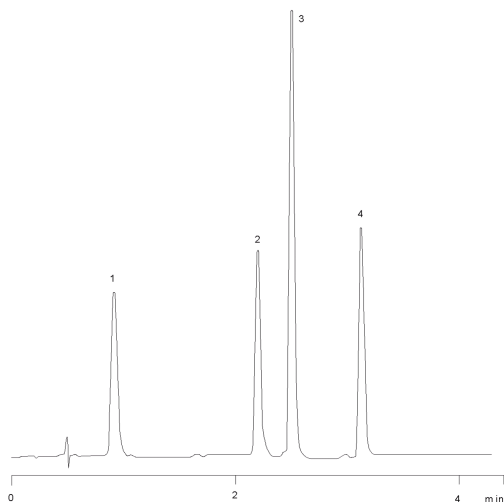
Eluent B: Acetonitrile

Gradient Profile:	Step No.	Time (min)	Pct A	Pct B
	1	0	98	2
	2	4	50	50

Flow Rate: 2 mL/min

Col. Temp.: ambient

Detection: UV-Vis Abs.-Variable Wave.(UV) @ 210 nm (ambient)



ANALYTES:

- 1 Acesulfame-K
- 2 Saccharin sodium (Sodium o-benzosulfimide)
- 3 2,5-Diketopiperazine
- 4 Aspartame



Products used in this application:

