

GC Application

ID No.: 15576

Heroin (BSTFA Derivatization) on ZB1ms 20x0.18x0.18

Column: Zebtron[™] ZB-1MS, GC Cap. Column 20 m x 0.18 mm x 0.18 μ m, Ea

Phase: 100% Dimethylpolysiloxane

Dimensions: 20 meters x 0.18 mm x 0.18 μ m

Order No: 7FD-G011-08

Oven Profile: 220°C to 320°C at 20°C/min for 2 min

Carrier Gas: Constant Flow Helium, 0.8 mL/min

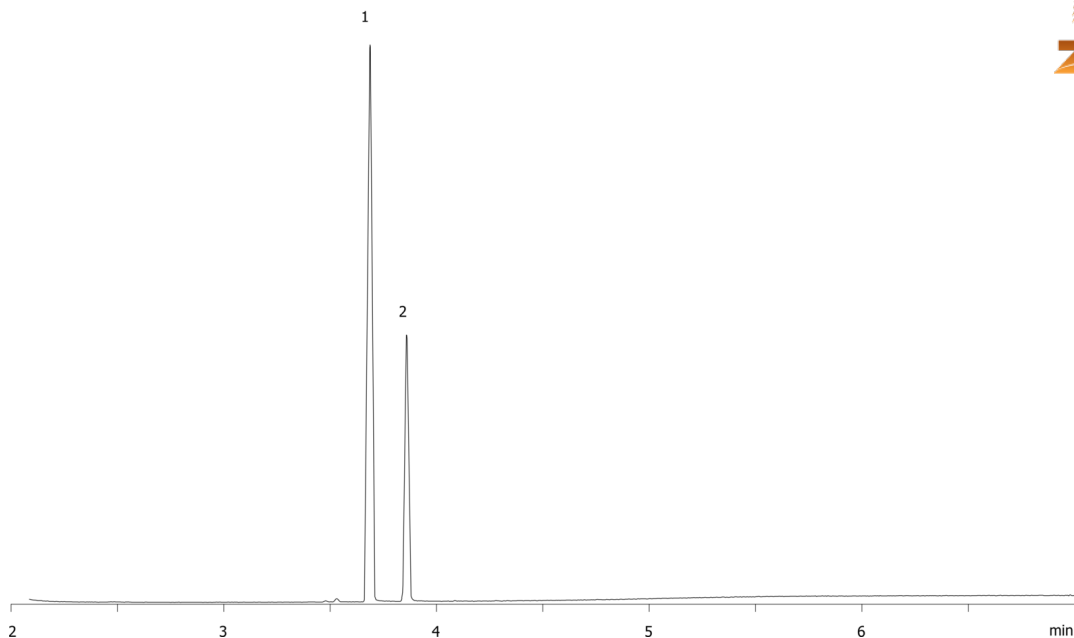
Injection: Split 10:1 1 μ L @ 290°C

Detection: Mass Selective (MSD) (240°C)

15576



Products used in this application:



ANALYTES:

- 1 6-MAM-TMS
- 2 Heroin (Diacetylmorphine)