

# HPLC Application

ID No.: 15685

## Lorazepam (Gemini 5µm C18)

**Column:** Gemini<sup>®</sup> 5 µm C18 110 Å, LC Column 150 x 4.6 mm, Ea

**Dimensions:** 150 x 4.6 mm ID

**Order No:** 00F-4435-E0

**Elution Type:** Isocratic

**Eluent A:** 1% Acetic Acid

**Eluent B:** Methanol

Gradient Profile:	Step No.	Time (min)	Pct A	Pct B
	1	0	30	70

**Flow Rate:** 1 mL/min

**Col. Temp.:** ambient

**Detection:** UV-Vis Abs.-Variable Wave.(UV) @ 254 nm (ambient)

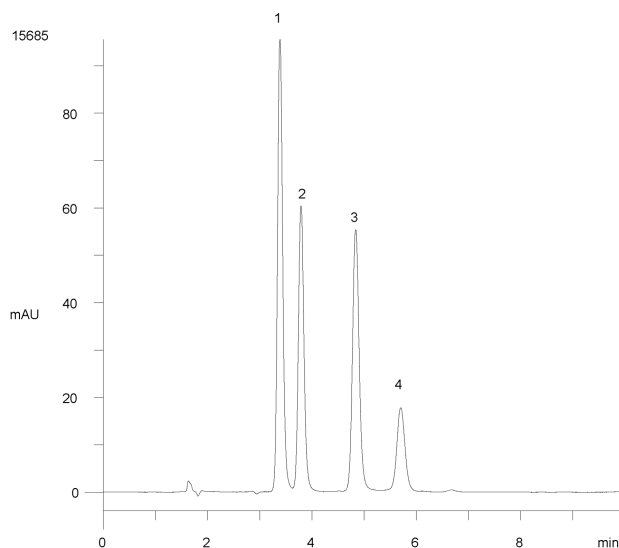
**Analyst Note:** SecurityGuard<sup>™</sup> Guard Cartridge System extends column lifetime.

- SecurityGuard Cartridges, Gemini C18 4 x 3.0mm, 10/Pk Part No.: AJ0-7597

- Holder Part No.: KJ0-4282



Products used in this application:



### ANALYTES:

- 1** Lorazepam  
Retention Time: 3.386 min
- 2** Temazepam  
Retention Time: 3.79 min
- 3** Diazepam (Valium)  
Retention Time: 4.838 min
- 4** degradant or impurity  
Retention Time: 5.7 min

