

GC Application

ID No.: 15695

EPA Method 8270C: Semivolatile Organic Analysis on ZB-5MS

Column: Zebron[™] ZB-5MS, GC Cap. Column 20 m x 0.18 mm x 0.18 μm, Ea

Phase: 5% Phenyl-Arylene 95% Dimethylpolysiloxane

Dimensions: 20 meters x 0.18 mm x 0.18 μm

Order No: 7FD-G010-08

Oven Profile: 40°C for 0.5 min to 200°C at 20°C/min to 300°C at 25°C/min 3 min

Carrier Gas: Constant Flow Helium, 1.2 mL/min

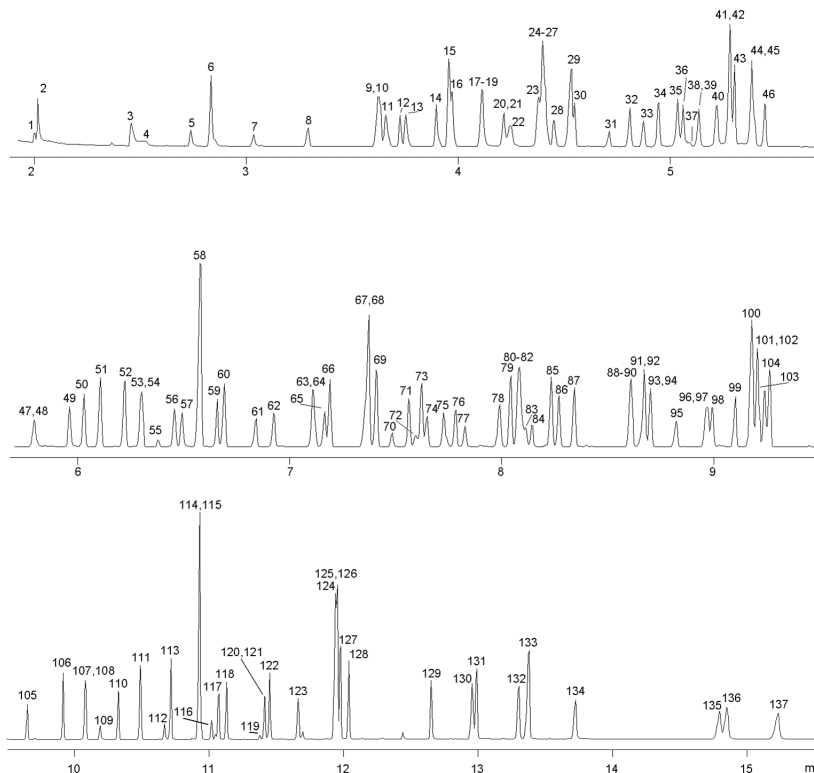
Injection: Splitless :1 1 μL @ 280°C

Detection: Mass Selective (MSD) (0°C)

15695



Products used in this application:



EPA Method 8270C: Semivolatile Organic Analysis on ZB-5MS

ANALYTES:

1	N-Nitrosodimethylamine	41	Naphthalene-d8 (internal standard)	81	Zinophos
2	Pyridine	42	Phentermine	82	2-Methyl-5-nitroaniline
3	2-Methylpyridine	43	Naphthalene	83	4-Nitroaniline
4	N-Nitrosomethylethylamine	44	4-Chloroaniline	84	4,6-Dinitro-2-methylphenol
5	Methyl methanesulfonate	45	Hexachloropropene	85	Diphenylamine
6	2-Fluorophenol (surrogate)	46	Hexachlorobutadiene	86	Azobenzene
7	N-Nitrosodiethylamine	47	N-Nitrosodibutylamine	87	2,4,6-Tribromophenol (surrogate)
8	Ethyl methanesulfonate	48	1,4-Phenyldiamine	88	Di-allate
9	Phenol-d6 (surrogate)	49	4-Chloro-3-methylphenol	89	1,3,5-Trinitrobenzene
10	Phenol	50	Isosafrole (cis / trans isomers)	90	Phorate
11	Aniline	51	2-Methylnaphthalene	91	4-Bromophenylphenylether
12	bis(2-Chloroethyl)ether	52	1-Methylnaphthalene	92	Phenacetin
13	2-Chlorophenol	53	Hexachlorocyclopentadiene	93	Di-allate (isomer)
14	1,3-Dichlorobenzene	54	1,2,4,5-Tetrachlorobenzene	94	Hexachlorobenzene
15	1,4-Dichlorobenzene-d4 (internal standard)	55	Safrole (isomer)	95	Dimethoate
16	1,4-Dichlorobenzene	56	2,4,6-Trichlorophenol	96	Pentachlorophenol
17	2-Methylphenol	57	2,4,5-Trichlorophenol	97	Pentachloronitrobenzene
18	1,2-Dichlorobenzene	58	2-Fluorobiphenyl (surrogate)	98	4-Aminobiphenyl
19	Benzyl alcohol (Benzenemethanol)	59	Safrole	99	Pronamide (Propyzamide)
20	4-Methylphenol	60	2-Chloronaphthalene	100	Phenanthrene-d10 (internal standard)
21	3-Methylphenol	61	2-Nitroaniline	101	Dinoseb
22	Bis(2-Chloroisopropyl)ether	62	1,4-Naphthoquinone	102	Phenanthrene
23	N-Nitrosopyrrolidine	63	1,3-Dinitrobenzene	103	Disulfoton
24	Acetophenone	64	Dimethyl phthalate	104	Anthracene
25	N-Nitroso-di-n-propylamine	65	2,6-Dinitrotoluene	105	Methyl parathion
26	o-Toluidine	66	Acenaphthylene	106	Di-n-butyl phthalate
27	N-Nitrosomorpholine	67	3-Nitroaniline	107	4-Nitroquinoline-n-oxide
28	Hexachloroethane	68	Acenaphthene-d10 (internal standard)	108	Ethyl parathion
29	Nitrobenzene-d5 (surrogate)	69	Acenaphthene	109	Methapyrilene
30	Nitrobenzene	70	2,4-Dinitrophenol	110	Isodrin
31	N-Nitrosopiperidine	71	Pentachlorobenzene	111	Fluoranthene
32	Isophorone	72	4-Nitrophenol	112	Benzidine
33	2-Nitrophenol	73	Dibenzofuran	113	Pyrene
34	2,4-Dimethylphenol	74	2,4-Dinitrotoluene	114	p-Terphenyl-d14 (surrogate)
35	Triethylphosphorothioate	75	1-Naphthylamine	115	Aramite
36	bis(2-Chloroethoxy)methane	76	Tetrachlorophenol	116	Aramite (isomer)
37	Benzoic acid	77	2-Naphthylamine	117	Dimethylaminoazobenzene
38	2,4-Dichlorophenol	78	Diethyl phthalate	118	Chlorobenzilate
39	2,6-Dichlorophenol	79	Fluorene	119	Famphur (Famophos)
40	1,2,4-Trichlorobenzene	80	4-Chlorophenylether	120	Kepone
				121	3,3'-Dimethylbenzidine
				122	Benzylbutylphthalate
				123	2-Acetylaminofluorene (2-Acetamidofluorene)
				124	Benz[a]anthracene
				125	3,3'-Dichlorobenzene
				126	Chrysene-d12 (internal standard)
				127	Chrysene
				128	Bis(2-Ethylhexyl)Phthalate
				129	Di-n-Octylphthalate
				130	Benzo[b]fluoranthene
				131	Benzo[k]fluoranthene

