

## Tricyclic Antidepressants on Gemini 5u C18

**Column:** Gemini® 5 µm C18 110 Å, LC Column 150 x 4.6 mm, Ea

**Dimensions:** 150 x 4.6 mm ID

**Order No:** 00F-4435-E0

**Elution Type:** Isocratic

**Eluent A:** 20mM Phosphate buffer, pH 7

**Eluent B:** Acetonitrile

**Eluent C:** Methanol

| Gradient Profile: | Step No. | Time (min) | Pct A | Pct B | Pct C |
|-------------------|----------|------------|-------|-------|-------|
|                   | 1        | 0          | 30    | 35    | 35    |

**Flow Rate:** 1.5 mL/min

**Col. Temp.:** ambient

**Detection:** UV-Vis Abs.-Variable Wave.(UV) @ 254 nm (ambient)

**Analyst Note:** SecurityGuard™ Guard Cartridge System extends column lifetime.

- SecurityGuard Cartridges, Gemini C18 4 x 3.0mm, 10/Pk Part No.: AJ0-7597

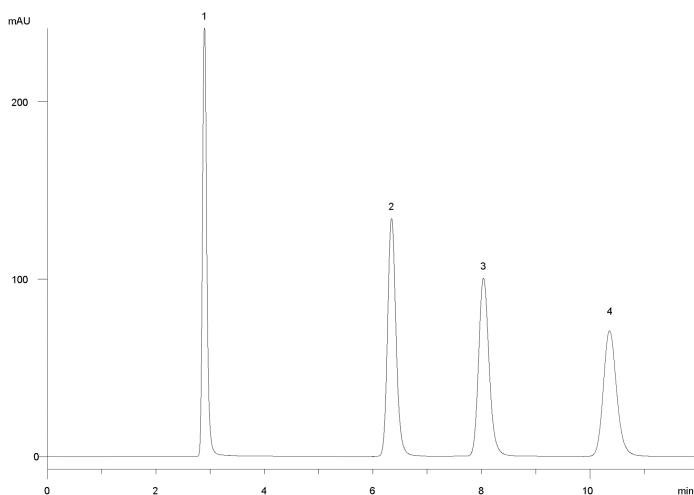
- Holder Part No.: KJ0-4282



Products used in this application:



15707



### ANALYTES:

- 1 Nortriptyline
- 2 Imipramine
- 3 Amitriptyline
- 4 Clomipramine

