

## Benzodiazepines on ZB-1MS

**Column:** Zebtron™ ZB-1MS, GC Cap. Column 12 m x 0.20 mm x 0.33 μm, Ea

**Phase:** 100% Dimethylpolysiloxane

**Dimensions:** 12 meters x 0.2 mm x 0.33 μm

**Order No:** 7DE-G011-14

**Oven Profile:** 150°C to 200°C at 30°C/min to 300 at 15°C/min for 2 min

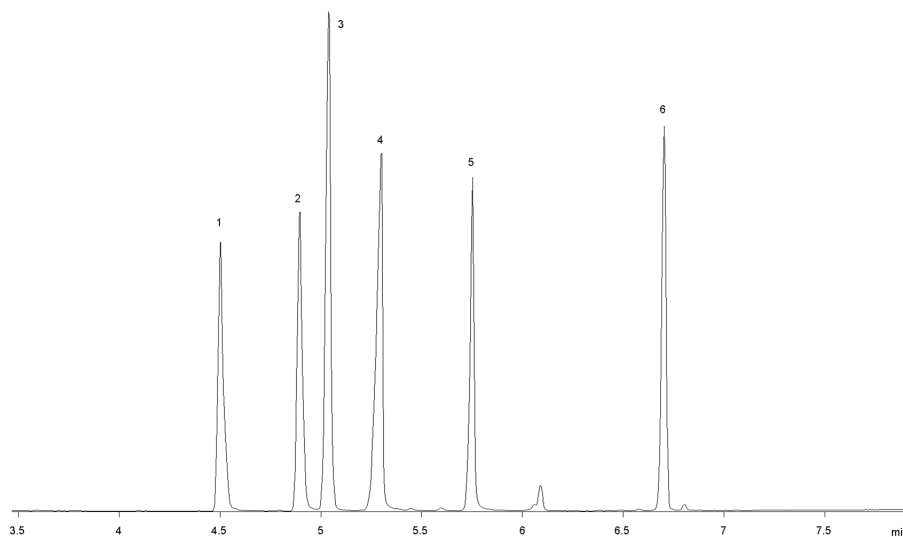
**Carrier Gas:** Constant Flow Helium, 1.2 mL/min

**Injection:** Splitless :1 3 μL @ 280°C

**Detection:** Mass Selective (MSD) (0°C)  
15782



Products used in this application:



### ANALYTES:

- 1 Oxazepam
- 2 Lorazepam
- 3 Diazepam (Valium)
- 4 Nordazepam
- 5 Temazepam
- 6 Flurazepam

