

## Green Tea Catechins on Gemini 3um C18

**Column:** Gemini® 3 µm C18 110 Å, LC Column 100 x 4.6 mm, Ea

**Dimensions:** 100 x 4.6 mm ID

**Order No:** 00D-4439-E0

**Elution Type:** Gradient

**Eluent A:** 0.1% TFA in water

**Eluent B:** Methanol

Gradient Profile:	Step No.	Time (min)	Pct A	Pct B
	1	0	75	25
	2	3	75	25
	3	8	50	50

**Flow Rate:** 1 mL/min

**Col. Temp.:** ambient

**Detection:** UV-Vis Abs.-Variable Wave.(UV) @ 230 nm (ambient)

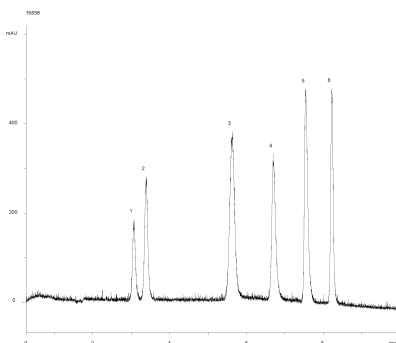
**Analyst Note:** SecurityGuard™ Guard Cartridge System extends column lifetime.

- SecurityGuard Cartridges, Gemini C18 4 x 3.0mm, 10/Pk Part No.: AJ0-7597

- Holder Part No.: KJ0-4282



Products used in this application:



### ANALYTES:

- 1 Epigallocatechin  
Retention Time: 3.06 min
- 2 Catechin  
Retention Time: 3.38 min
- 3 Epicatechin  
Retention Time: 5.62 min
- 4 Gallocatechin gallate  
Retention Time: 6.9 min
- 5 Epicatechin gallate  
Retention Time: 7.54 min
- 6 Catechin gallate  
Retention Time: 8.2 min

