

HPLC Application

ID No.: 15928

Basic Compounds at Low pH Using Luna 5u C18(2) Axia Packed 50x21.2mm

Column: Luna® 5 µm C18(2) 100 Å, LC Column 50 x 21.2 mm, AXIA™ Packed, Ea

Dimensions: 50 x 21.2 mm ID

Order No: 00B-4252-P0-AX

Elution Type: Gradient

Eluent A: 0.5% TFA in Water

Eluent B: 0.5% TFA in Acetonitrile

Gradient Profile:	Step No.	Time (min)	Pct A	Pct B
	1	0	95	5
	2	7	5	95

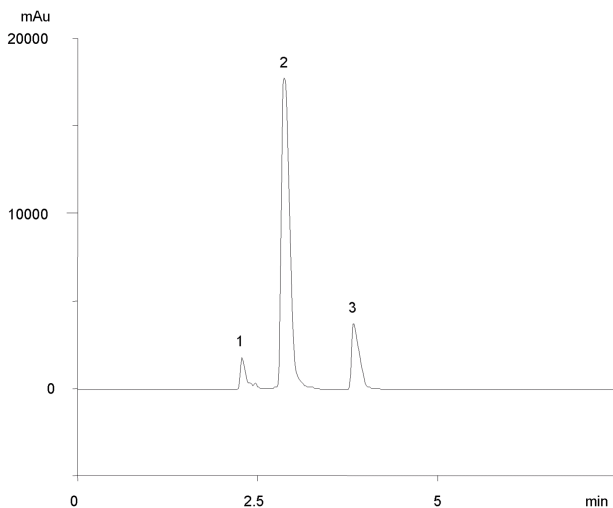
Flow Rate: 30 mL/min

Col. Temp.: ambient

Detection: UV-Vis Abs.-Variable Wave.(UV) @ 254 nm (ambient)

Analyst Note: Compare to App ID 15973: Selectivity to high pH on Gemini 10µm C18 Axia Packed column.

15928



ANALYTES:

- 1 Triprolidine (Actidil) (1.6mg)
- 2 Methacycline (16mg)
- 3 Amitriptyline (5.25mg)



Products used in this application:

