

HPLC Application

ID No.: 15992

OPA Amino Acids on Gemini C18

Column: Gemini® 5 µm C18 110 Å, LC Column 150 x 4.6 mm, Ea

Dimensions: 150 x 4.6 mm ID

Order No: 00F-4435-E0

Elution Type: Gradient

Eluent A: 40mM NaH₂PO₄, pH 7.8

Eluent B: Acetonitrile/Methanol/Water (45:45:10)

Gradient Profile:	Step No.	Time (min)	Pct A	Pct B
	1	0	100	0
	2	40.5	59.5	40.5
	3	41	39	61
	4	43	39	61
	5	44	18	82
	6	44.5	0	100
	7	46.5	0	100
	8	47	100	0
	9	49	100	0

Flow Rate: 1 mL/min

Col. Temp.: 40 °C

Detection: Fluorimetric @ 340 nm (ambient)

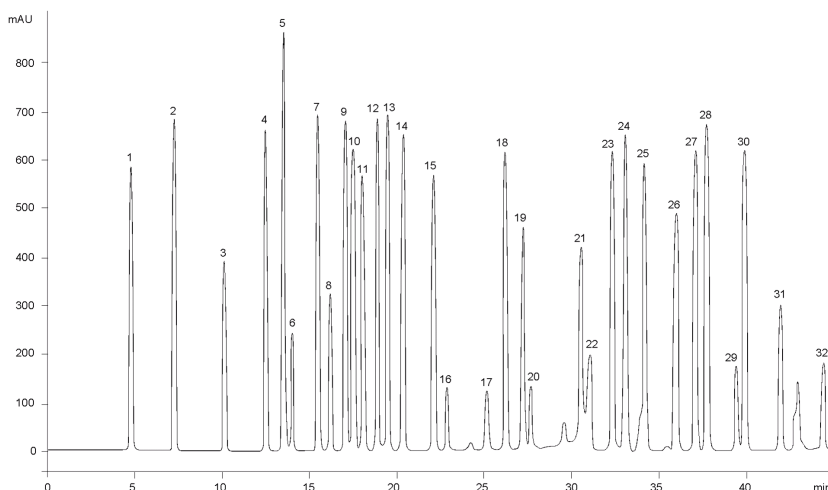
Detector Info: OPA derivatization performed on-line prior to injection on HP1100

Analyst Note: Courtesy of Jens Olaf Kroemer, Technische Biochemie, Universität des Saarlandes, Germany

15992



Products used in this application:



OPA Amino Acids on Gemini C18

ANALYTES:

- 1 Aspartic acid
- 2 Glutamic acid
- 3 Cysteine
- 4 Asparagine
- 5 Serine
- 6 Homocysteine
- 7 Glutamine
- 8 Histidine
- 9 Homoserin
- 10 Glycine
- 11 Threonine
- 12 Citrulline
- 13 Arginine
- 14 beta-Alanine
- 15 Alanine
- 16 gamma-Aminobutyric acid
- 17 o-Acetyl-serine
- 18 Tyrosine
- 19 o-Acetyl-homoserine
- 20 alpha-Aminobutyric acid
- 21 L-Cystathionine
- 22 Histidine 2 (Iodoacetic acid)
- 23 Valine
- 24 Methionine
- 25 Norvaline
- 26 Tryptophan
- 27 Phenylalanine
- 28 Isoleucine
- 29 Ornithine
- 30 Leucine
- 31 Lysine
- 32 Proline

