

HPLC Application

ID No.: 16051

Antidepressants Mix by Gemini 5µm C18 at pH 2.5

Column: Gemini[®] 5 µm C18 110 Å, LC Column 150 x 4.6 mm, Ea

Dimensions: 150 x 4.6 mm ID

Order No: 00F-4435-E0

Elution Type: Isocratic

Eluent A: 20mM Potassium Phosphate, pH 2.5

Eluent B: Acetonitrile

Eluent C: Methanol

Gradient Profile:	Step No.	Time (min)	Pct A	Pct B	Pct C
	1	0	55	25	20

Flow Rate: 1.5 mL/min

Col. Temp.: ambient

Detection: UV-Vis Abs.-Variable Wave.(UV) @ 254 nm (ambient)

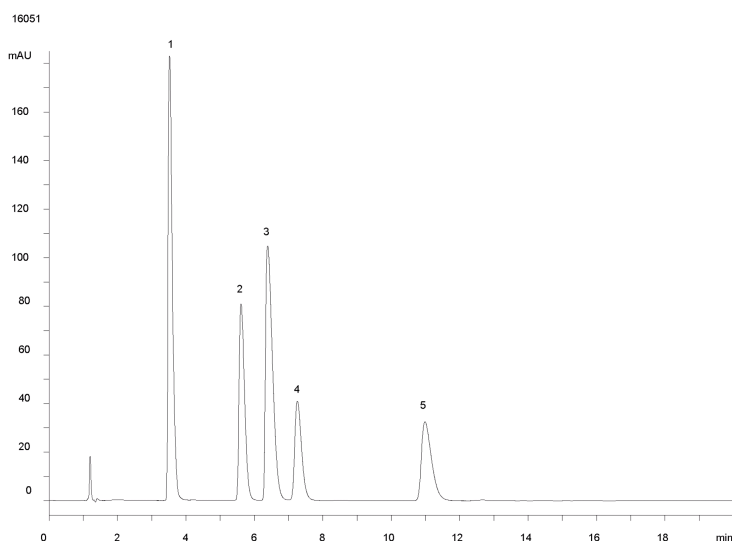
Analyst Note: SecurityGuard[™] Guard Cartridge System extends column lifetime.

- SecurityGuard Cartridges, Gemini C18 4 x 3.0mm, 10/Pk Part No.: AJ0-7597

- Holder Part No.: KJ0-4282



Products used in this application:



ANALYTES:

- 1 Nordoxepin / Doxepin (co-elution)
- 2 Imipramine
- 3 Nortriptyline / Amitriptyline (co-elution)
- 4 Trimipramine
- 5 Clomipramine

