

Low Breakdown of Endrin on ZB-MR1

Column: Zebtron[™] ZB-MultiResidue[™]-1, GC Cap. Column 30 m x 0.32 mm x 0.50 μ m, Ea

Phase:

Dimensions: 30 meters x 0.32 mm x 0.5 μ m

Order No: 7HM-G016-17

Oven Profile: 100 °C for 0.5 min to 340 °C at 15 °C/min for 2 min

Carrier Gas: Constant Flow Helium, 1.6 mL/min

Injection: Splitless :1 1 μ L @ 250°C

Detection: Electron Capture (ECD) (350°C)

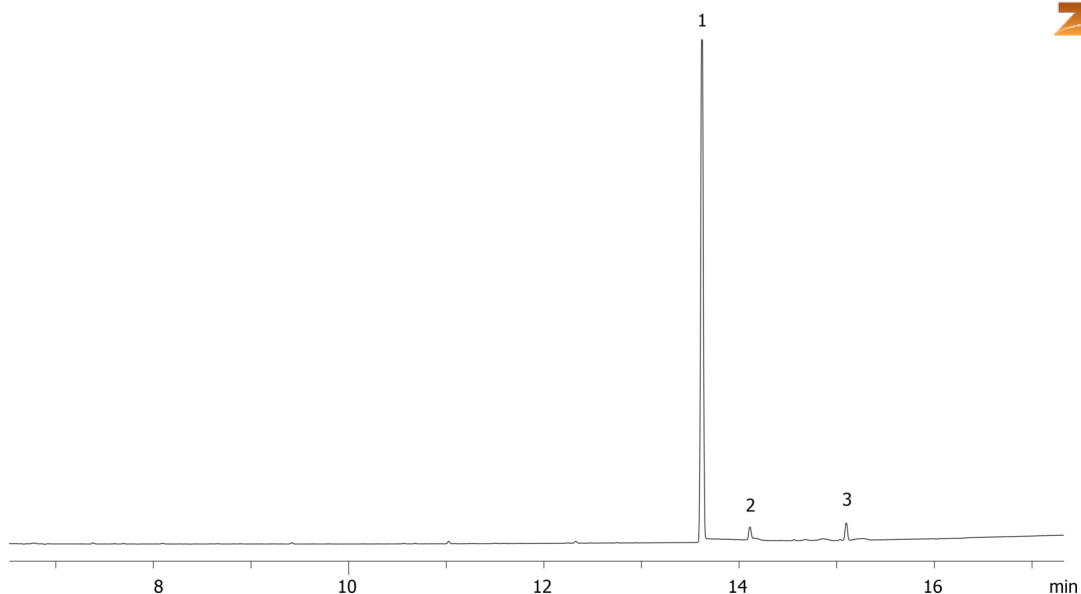
Analyst Note: Analyte was 250 pg on column.



Products used in this application:



16163



ANALYTES:

- 1 Endrin
- 2 Endrin aldehyde
- 3 Endrin ketone

