

Low Breakdown of DDT on ZB-MR2

Column: Zebtron[™] ZB-MultiResidue[™]-2, GC Cap. Column 30 m x 0.32 mm x 0.25 µm, Ea

Phase:

Dimensions: 30 meters x 0.32 mm x 0.25 µm

Order No: 7HM-G017-11

Oven Profile: 100 °C for 0.5 min to 340 °C at 15 °C/min for 2 min

Carrier Gas: Constant Flow Helium, 1.6 mL/min

Injection: Splitless :1 1 µL @ 250°C

Detection: Electron Capture (ECD) (350°C)

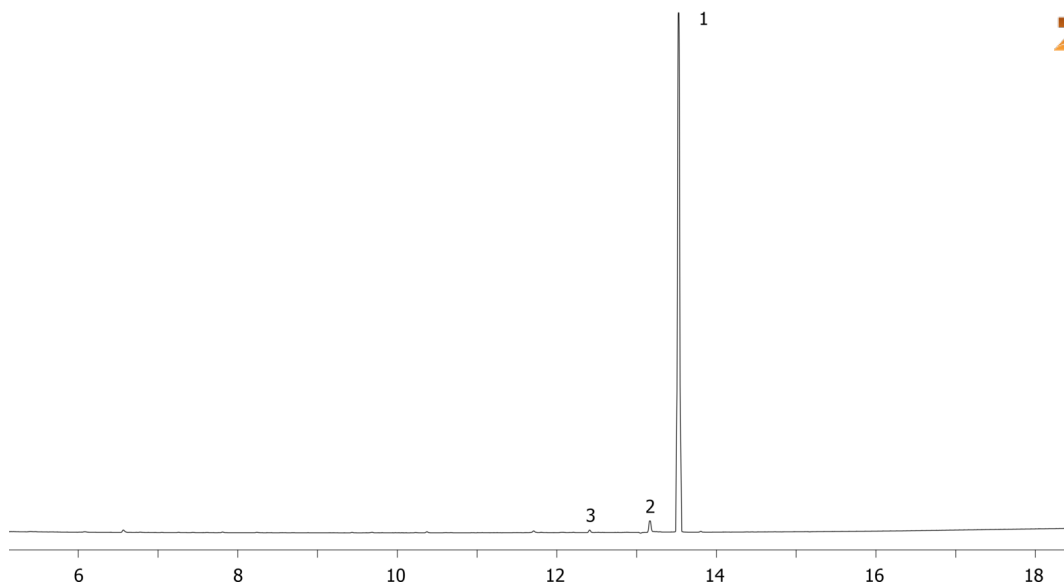
Analyst Note: Analyte was 250 pg on column.



Products used in this application:



16166



ANALYTES:

- 1 DDT (Chlorophenothane)
- 2 DDD
- 3 DDE

