

## Overlay of PEGylated vs. Native Proteins on Jupiter® 300 C18 Column

**Column:** Jupiter® 5 µm C18 300 Å, LC Column 150 x 4.6 mm, Ea

**Dimensions:** 150 x 4.6 mm ID

**Order No:** 00F-4053-E0

**Elution Type:** Gradient

**Eluent A:** 0.1% TFA and 2% ACN in Water

**Eluent B:** 70/20% ACN/IPA, 0.08% TFA in Water

Gradient Profile:	Step No.	Time (min)	Pct A	Pct B
	1	0	85	15
	2	25	30	70

**Flow Rate:** 1 mL/min

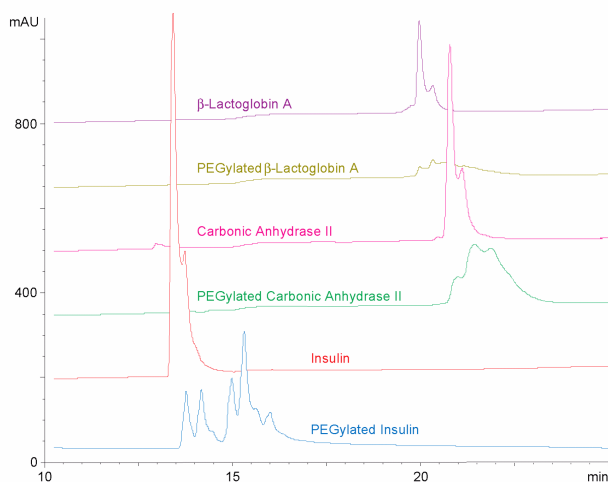
**Col. Temp.:** 45 °C

**Detection:** UV-Vis Abs.-Variable Wave.(UV) @ 214 nm (ambient)

**Analyst Note:** Reversed phase of PEGylated and native proteins run on a Jupiter 300 C4 column. Note the decrease in resolution of PEGylated vs. native proteins.  
16192



Products used in this application:



### ANALYTES:

- 1 PEGylated vs. Native Proteins

