

## Industrial Chemicals: Ethers on ZB-WAXplus

**Column:** Zebron<sup>™</sup> ZB-WAXplus<sup>™</sup>, GC Cap. Column 30 m x 0.53 mm x 1.00  $\mu$ m, Ea

**Phase:** Polyethylene Glycol (PEG)

**Dimensions:** 30 meters x 0.53 mm x 1  $\mu$ m

**Order No:** 7HK-G013-22

**Oven Profile:** 35 °C for 6 min to 200 °C at 20 °C/min hold 16 min.

**Carrier Gas:** Constant Flow Helium, 3 mL/min

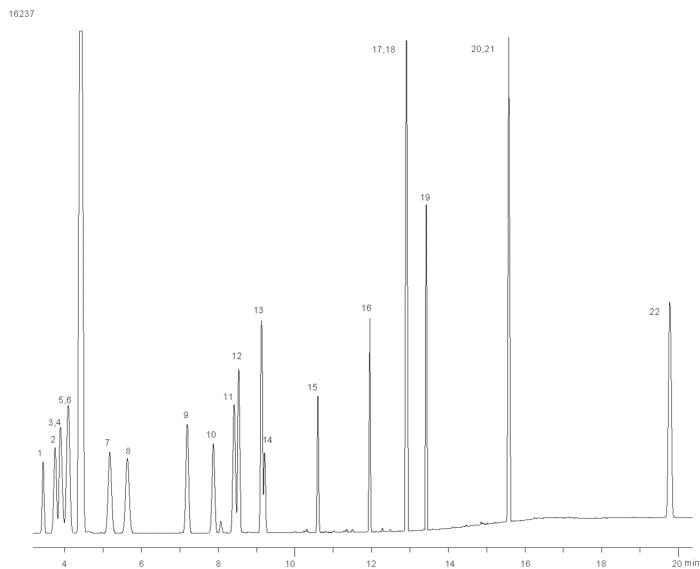
**Injection:** Split 10:1 1  $\mu$ L @ 200°C

**Detection:** Flame Ionization (FID) (220°C)

**Analyst Note:** Concentration per compound 250 ppm in Carbon disulfide



Products used in this application:



## Industrial Chemicals: Ethers on ZB-WAXplus

### ANALYTES:

- 1 Ethyl ether
- 2 Isopropyl ether
- 3 Ethyl vinyl ether
- 4 Methyl tert-butyl ether (MTBE)
- 5 tert-Butyl ethyl ether
- 6 2-Butyl methyl ether
- 7 Propyl ether
- 8 n-Butyl ethyl ether
- 9 Butyl vinyl ether
- 10 Acetal
- 11 Tetrahydropyran
- 12 Allyl ether
- 13 Butyl ether
- 14 1,3-Dioxolane
- 15 1,4-Dioxane
- 16 Epichlorohydrin
- 17 Allyl glycidil ether
- 18 Diethylene glycol dimethyl ether
- 19 Diethylene glycol diethyl ether
- 20 Triethylene glycol dimethyl ether
- 21 Diethylene glycol dibutyl ether
- 22 Di(ethyleneglycol) 2-ethyl hexyl ether

