

GC Application

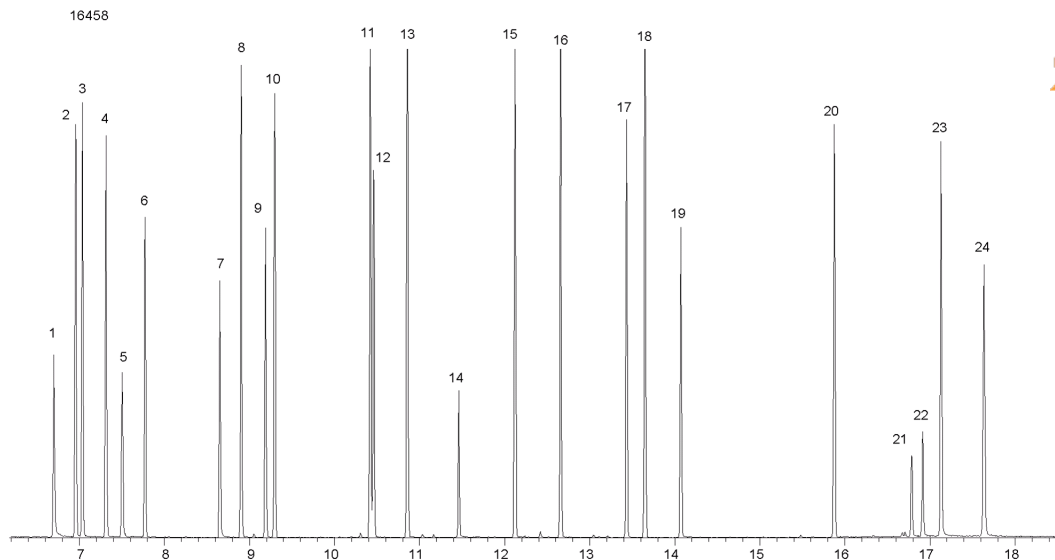
ID No.: 16458

Chlorinated Compounds on ZB-5MSi

Column: Zebtron[™] ZB-5MSi, GC Cap. Column 30 m x 0.25 mm x 0.25 μ m, Ea
Phase: 5% Phenyl 95% Dimethylpolysiloxane
Dimensions: 30 meters x 0.25 mm x 0.25 μ m
Order No: 7HG-G018-11
Oven Profile: 40 °C for 2 min to 260 °C @ 15 °C/min for 5 min to 320 °C at 15 °C/min for 2 min.
Carrier Gas: Constant Flow Helium, 1.7 mL/min
Injection: Splitless 20:1 1 μ L @ 240°C
Detection: Mass Selective (MSD) (180°C)
Analyst Note: 50ppm in methylene chloride



Products used in this application:



Chlorinated Compounds on ZB-5MSi

ANALYTES:

- 1 bis(2-Chloroethyl)ether
- 2 1,3-Dichlorobenzene
- 3 1,4-Dichlorobenzene
- 4 1,2-Dichlorobenzene
- 5 bis(2-Chloroisopropyl)ether
- 6 Hexachloroethane
- 7 bis(2-Chloroethoxy)methane
- 8 1,2,4-Trichlorobenzene
- 9 Hexachloropropene
- 10 Hexachlorobutadiene
- 11 1,2,4,5-Tetrachlorobenzene
- 12 Hexachlorocyclopentadiene
- 13 2-Chloronaphthalene
- 14 1,3-Dinitrobenzene
- 15 Pentachlorobenzene
- 16 4-Chlorophenylphenylether
- 17 4-Bromophenyl phenyl ether
- 18 Hexachlorobenzene
- 19 Pentachloronitrobenzene
- 20 Isodrin
- 21 Aramite
- 22 Aramite (isomer)
- 23 Chlorobenzilate
- 24 Kepone

