

GC Application

ID No.: 16464

EPA 8151A Chlorinated Herbicides on ZB-XLB

Column: Zebron[™] ZB-XLB, GC Cap. Column 30 m x 0.25 mm x 0.50 µm, Ea

Phase: Proprietary XLB Phase

Dimensions: 30 meters x 0.25 mm x 0.5 µm

Order No: 7HG-G019-17

Oven Profile: 60 °C to 300°C @ 10°C/min

Carrier Gas: Constant Flow Helium, 1 mL/min

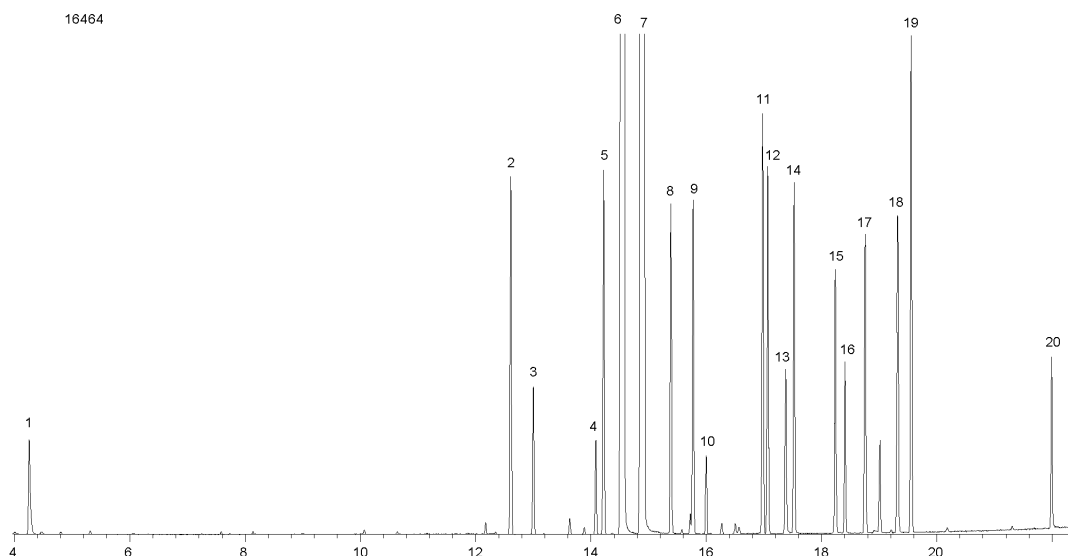
Injection: Split 5:1 1 µL @ 240°C

Detection: Mass Selective (MSD) (180°C)

Analyst Note: 50ppm in methanol
IS/Surrogate approx. 10ppm



Products used in this application:



EPA 8151A Chlorinated Herbicides on ZB-XLB

ANALYTES:

- 1 Dalapon
- 2 3,5-Dichlorobenzoic acid
- 3 4-Nitrophenol
- 4 DCAA (internal standard)
- 5 Dicamba
- 6 MCPP
- 7 MCPA
- 8 Dichlorprop
- 9 2,4-D
- 10 DBOB (internal standard)
- 11 Pentachlorophenol
- 12 Silvex
- 13 Chloramben
- 14 2,4,5-T
- 15 2,4-DB
- 16 Dinoseb
- 17 Bentazon
- 18 Picloram
- 19 Dacthal (DCPA)
- 20 Acifluorfen

