

## Aroclor 1016 on ZB-XLB

**Column:** Zebtron™ ZB-XLB, GC Cap. Column 15 m x 0.25 mm x 0.25 μm, Ea

**Phase:** Proprietary XLB Phase

**Dimensions:** 15 meters x 0.25 mm x 0.25 μm

**Order No:** 7EG-G019-11

**Oven Profile:** 150 °C to 300 °C @ 15 °C/min.

**Carrier Gas:** Constant Flow Hydrogen, 2 mL/min

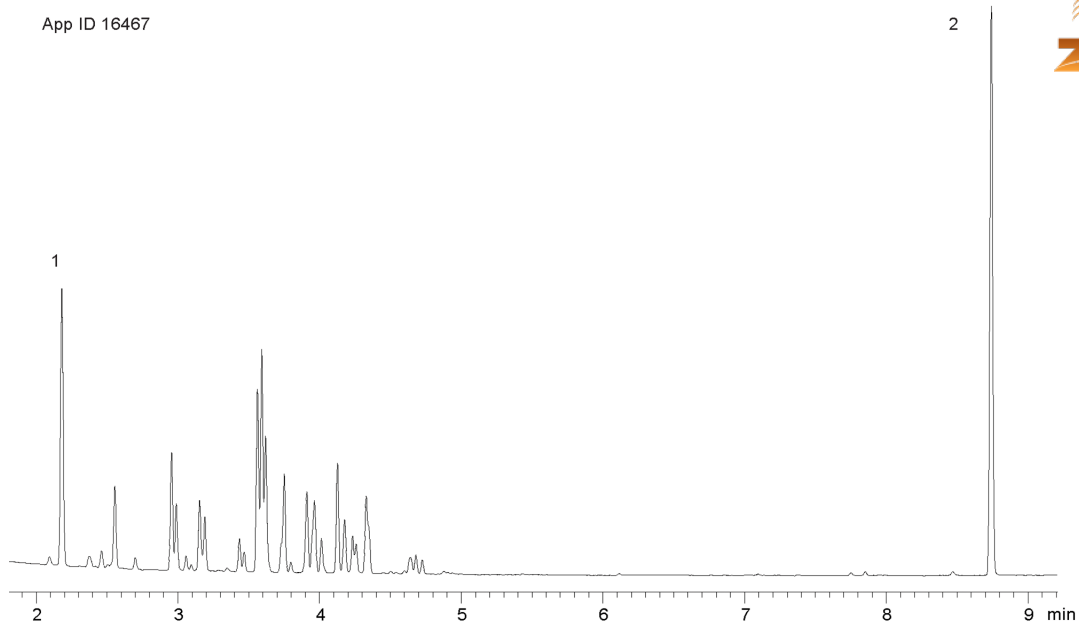
**Injection:** Split 10:1 1 μL @ 240°C

**Detection:** Electron Capture (ECD) (320°C)

**Analyst Note:** Aroclor 1016 concentration 1 ug/ml



Products used in this application:



### ANALYTES:

- 1 Tetrachloro-m-xylene (internal standard)
- 2 Decachlorobiphenyl (internal standard)