

GC Application

ID No.: 16496

Chlorophenols on ZB-MR1

Column: Zebtron[™] ZB-MultiResidue[™]-1, GC Cap. Column 30 m x 0.25 mm x 0.25 μm, Ea

Phase: Proprietary Pesticides Phase

Dimensions: 30 meters x 0.25 mm x 0.25 μm

Order No: 7HG-G016-11

Oven Profile: 60 °C for 0.5 min to 130 °C @ 10 °C/min to 210 °C @ 4 °C/min to 300 °C @ 10 °C/min

Carrier Gas: Constant Flow Helium, 1.2 mL/min

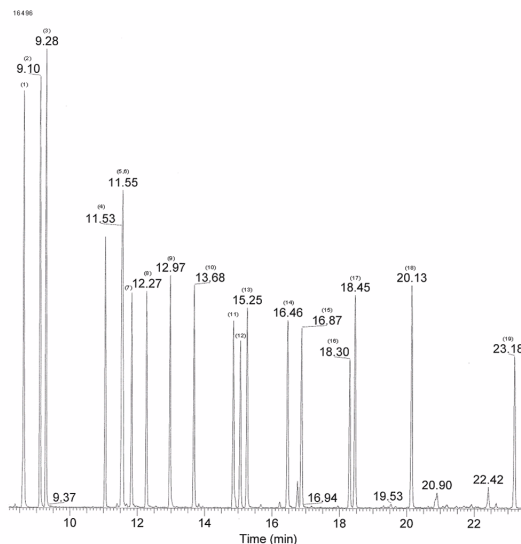
Injection: Splitless :1 1 μL @ 260°C

Detection: Mass Selective (MSD) (180°C)

Analyst Note: Column with 5 meter guard. Analytes are 0.5 ppm.
Application courtesy of Annegret Tischendorf, Südsachsen Wasser GmbH



Products used in this application:



Chlorophenols on ZB-MR1

ANALYTES:

- 1 2-Chlorophenol
- 2 3-Chlorophenol
- 3 4-Chlorophenol
- 4 2,6-Dichlorophenol
- 5 2,4-Dichlorophenol
- 6 2,5-Dichlorophenol
- 7 3,5-Dichlorophenol
- 8 2,3-Dichlorophenol
- 9 3,4-Dichlorophenol
- 10 2,4,6-Trichlorophenol
- 11 2,3,6-Trichlorophenol
- 12 2,3,5-Trichlorophenol
- 13 2,4,5-Trichlorophenol
- 14 2,3,4-Trichlorophenol
- 15 3,4,5-Trichlorophenol
- 16 2,3,5,6-Tetrachlorophenol
- 17 2,3,4,6-Tetrachlorophenol
- 18 2,3,4,5-Tetrachlorophenol
- 19 Pentachlorophenol

