

# GC Application

ID No.: 16525

## Benzene derivatives on ZB-MR1

**Column:** Zebron™ ZB-MultiResidue™-1, GC Cap. Column 30 m x 0.25 mm x 0.25 µm, Ea

**Phase:** Proprietary Pesticides Phase

**Dimensions:** 30 meters x 0.25 mm x 0.25 µm

**Order No:** 7HG-G016-11

**Oven Profile:** 40°C for 2 min to 320°C @ 20°C/min for 5 min

**Carrier Gas:** Constant Flow Helium, 1 mL/min

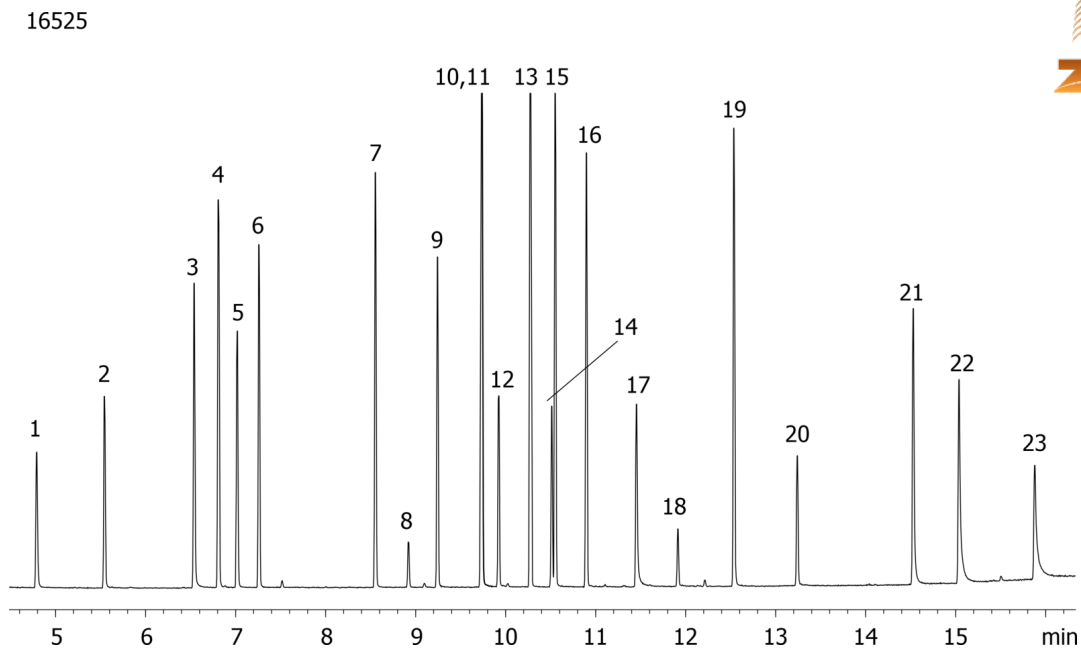
**Injection:** Split 5:1 1 µL @ 240°C

**Detection:** Mass Selective (MSD) (230°C)

**Analyst Note:** Analytes are 25ppm in methylene chloride



Products used in this application:



## Benzene derivatives on ZB-MR1

### ANALYTES:

- 1 Methyl methane sulfonate
- 2 Ethyl methane sulfonate
- 3 Benzyl alcohol (Benzenemethanol)
- 4 Acetophenone
- 5 Nitrobenzene
- 6 Isophorone
- 7 Safrole
- 8 Isosafrole
- 9 Isosafrole (isomer)
- 10 1,4-Naphthoquinone
- 11 Dimethyl phthalate
- 12 2,6-Dinitrotoluene
- 13 Dibenzofuran
- 14 2,4-Dinitrotoluene
- 15 Diethyl phthalate
- 16 Azobenzene
- 17 Phenacetin
- 18 1,3,5-Trinitrobenzene
- 19 Dibutyl phthalate
- 20 4-Nitroquinoline-1-oxide
- 21 Butyl benzyl phthalate
- 22 bis(2-Ethylhexyl)phthalate
- 23 Di-n-octyl phthalate

