

# GC Application

ID No.: 16571

## EPA 552.2 on ZB-XLB (Carrier Gas: Hydrogen)

**Column:** Zebtron<sup>™</sup> ZB-XLB, GC Cap. Column 30 m x 0.32 mm x 0.25  $\mu$ m, Ea

**Phase:** Proprietary XLB Phase

**Dimensions:** 30 meters x 0.32 mm x 0.25  $\mu$ m

**Order No:** 7HM-G019-11

**Oven Profile:** 40 °C to 80 °C @ 12 °C/min for 4 min to 225 °C @ 30 °C/min.

**Carrier Gas:** Constant Flow Hydrogen, 2 mL/min

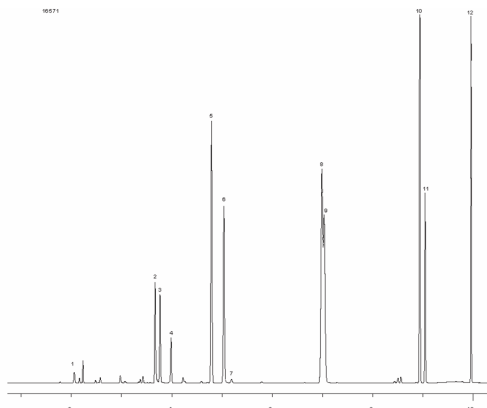
**Injection:** Splitless :1 1  $\mu$ L @ 250°C

**Detection:** Electron Capture (ECD) (250°C)

**Analyst Note:** Standard concentration mix 0.5 ppm



Products used in this application:



## EPA 552.2 on ZB-XLB (Carrier Gas: Hydrogen)

### ANALYTES:

- 1 Chloroacetic acid
- 2 Bromoacetic acid
- 3 Dichloroacetic acid
- 4 Dalapon
- 5 Trichloroacetic acid
- 6 Bromochloroacetic acid
- 7 1,2,3-Trichloropropane (internal standard)
- 8 Bromodichloroacetic acid
- 9 Dibromoacetic acid
- 10 Chlorodibromoacetic acid
- 11 2,3-Dibromopropionic acid (surrogate)
- 12 Tribromoacetic acid

