

GC Application

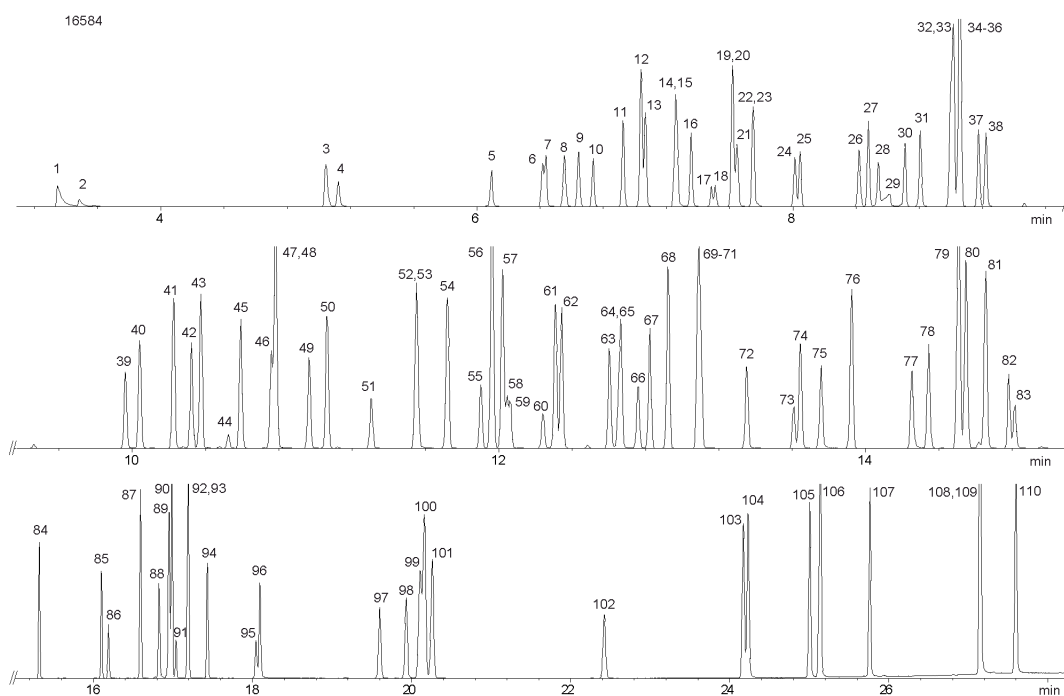
ID No.: 16584

EPA Method 8270C on ZB-XLB

Column: Zebtron[™] ZB-XLB, GC Cap. Column 30 m x 0.25 mm x 0.25 µm, Ea
Phase: Proprietary XLB Phase
Dimensions: 30 meters x 0.25 mm x 0.25 µm
Order No: 7HG-G019-11
Oven Profile: 40 °C for 2 min to 260 °C @ 15 °C/min for 5 min to 340 °C @ 15 °C/min for 5 min.
Carrier Gas: Constant Flow Helium, 1.5 mL/min
Injection: Split 5:1 1 µL @ 250°C
Detection: Mass Selective (MSD) (180°C)
Analyst Note: Analytes are 25ppm in methylene chloride.



Products used in this application:



EPA Method 8270C on ZB-XLB

ANALYTES:

1 Pyridine	41 2-Methylnaphthalene	81 Anthracene
2 N-Nitrosodimethylamine	42 Hexachlorocyclopentadiene	82 Dinoseb
3 2-Fluorophenol	43 1-Methylnaphthalene	83 1,3,5-Trinitrobenzene
4 Methylmethane sulfonate	44 Isosafrole	84 Dibutyl phthalate
5 Ethyl methanesulfonate	45 1,2,4,5-Tetrachlorobenzene	85 Isodrin
6 Phenol-d6	46 2,4,6-Trichlorophenol	86 4-Nitroquinoline-1-oxide
7 Phenol	47 2,4,5-Trichlorophenol	87 Fluoranthene
8 Aniline	48 2-Fluorobiphenyl	88 Benzidine
9 2-Chlorophenol	49 Isosafrole (isomer)	89 Pyrene-d10
10 bis(2-Chloroethyl)ether	50 2-Chloronaphthalene	90 Pyrene
11 1,2-Dichlorobenzene	51 2-Nitroaniline	91 Aramite
12 1,4-Dichlorobenzene-d4	52 1,4-Naphthoquinone	92 Aramite (isomer)
13 1,4-Dichlorobenzene	53 Dimethylphthalate	93 p-Terphenyl-d14
14 1,3-Dichlorobenzene	54 Acenaphthylene	94 Chlorobenzilate
15 Benzyl alcohol (Benzenemethanol)	55 2,6-Dinitrotoluene	95 Kepone
16 2-Methylphenol	56 Acenaphthene-d10	96 Butylbenzyl phthalate
17 bis(2-Chloroisopropyl)ether	57 Acenaphthene	97 bis(2-Ethylhexyl)phthalate
18 bis(2-Chloroisopropyl)ether (isomer)	58 3-Nitroaniline	98 3,3'-Dichlorobenzidine
19 4-Methylphenol	59 1,3-Dinitrobenzene	99 Benz[a]anthracene
20 Hexachloroethane	60 4-Nitrophenol	100 Chrysene-d12
21 3-Methylphenol	61 Dibenzofuran	101 Chrysene
22 N-Nitrosodi-n-propylamine	62 Pentachlorobenzene	102 Di-n-octyl phthalate
23 Acetophenone	63 2,3,4,6-Tetrachlorophenol	103 Benzo[b]fluoranthene
24 Nitrobenzene-d5 (surrogate)	64 2,4-Dinitrophenol	104 Benzo[k]fluoranthene
25 Nitrobenzene	65 Diethylphthalate	105 Benzo[a]pyrene
26 Isophorone	66 2,4-Dinitrotoluene	106 Perylene-d12
27 2,4-Dimethylphenol	67 4-Chlorophenylphenylether	107 3-Methylcholanthrene
28 2-Nitrophenol	68 Fluorene	108 Ideno(1,2,3-cd)pyrene
29 Benzoic acid	69 Diphenylamine	109 Dibenz[a,h]anthracene
30 bis(2-Chloroethoxy)methane	70 4-Nitroaniline	110 Benzo[g,h,i]perylene
31 2,4-Dichlorophenol	71 Azobenzene	
32 1,2,4-Trichlorobenzene	72 2,4,6-Tribromophenol	
33 Naphthalene-d8	73 2-Methyl-4,6-dinitrophenol	
34 Naphthalene	74 4-Bromophenyl phenyl ether	
35 Hexachloropropene	75 Phenacetin	
36 Hexachlorobutadiene	76 Hexachlorobenzene	
37 2,6-Dichlorophenol	77 Pentachlorophenol	
38 4-Chloroaniline	78 Pentachloronitrobenzene	
39 4-Chloro-3-methylphenol	79 Phenanthrene-d10	
40 Safrole	80 Phenanthrene	

