

# HPLC Application

ID No.: 16638

## Monolith RP-C18e 50 x 2.0mm Column Stability Test for Protein Precipitation #5000 Injection

**Column:** Onyx<sup>™</sup> Monolithic C18, LC Column 50 x 2 mm, Ea

**Dimensions:** 50 x 2 mm ID

**Order No:** CH0-8373

**Elution Type:** Gradient

**Eluent A:** 0.1% formic acid in water

**Eluent B:** 0.1% formic acid in acetonitrile

Gradient Profile:	Step No.	Time (min)	Pct A	Pct B
	1	0	95	5
	2	1.5	5	95
	3	1.51	95	5
	4	1.95	95	5
	5	2	95	5

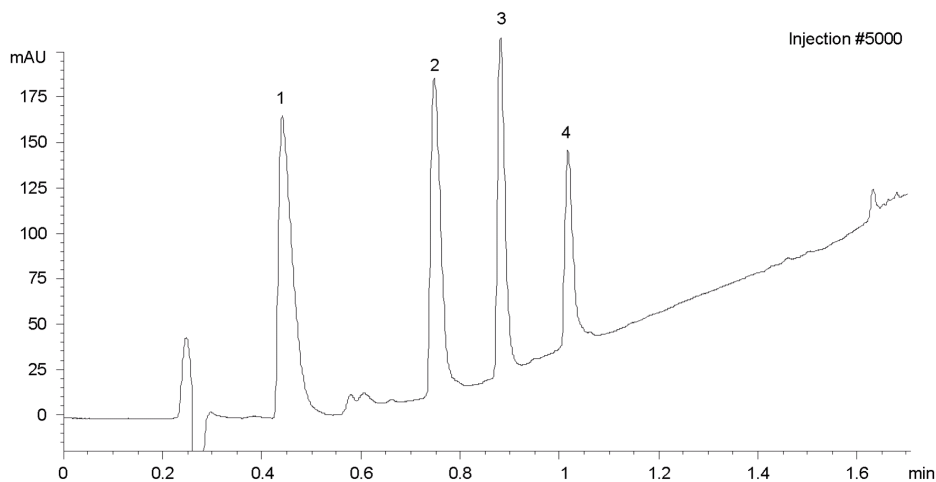
**Flow Rate:** 0.6 mL/min

**Col. Temp.:** 45 °C

**Detection:** UV-Vis Abs.-Diode Array (PDA) @ 230 nm (25 °C)  
16638



Products used in this application:



### ANALYTES:

- 1 Atenolol  
Retention Time: 0.441 min
- 2 Pindolol  
Retention Time: 0.747 min
- 3 Metoprolol  
Retention Time: 0.881 min
- 4 Alprenolol  
Retention Time: 1.017 min

