

Beer Well Drop on Rezex ROA

Column: Rezex™ ROA-Organic Acid H+ (8%), LC Column 300 x 7.8 mm, Ea

Dimensions: 300 x 7.8 mm ID

Order No: 00H-0138-K0

Elution Type: Isocratic

Eluent A: 0.005N Sulfuric Acid

Gradient	Step No.	Time (min)	Pct A
Profile:	1	0	100

Flow Rate: 0.6 mL/min

Col. Temp.: 60 °C

Detection: Refractive Index (RI) @ (40 °C)

Detector Info: Shimadzu Prominence LC-20A System (LC-20AT pump, DGU-20A3 Membrane Degasser, SIL-20AC Autosampler, CTO-20A Column Oven, RID-10A Differential Refractive Index Detector, CBM-20A System Controller, Class-VP Chromatography Data System. SecurityGuard™ Guard Cartridge System extends column lifetime.

Analyst Note:

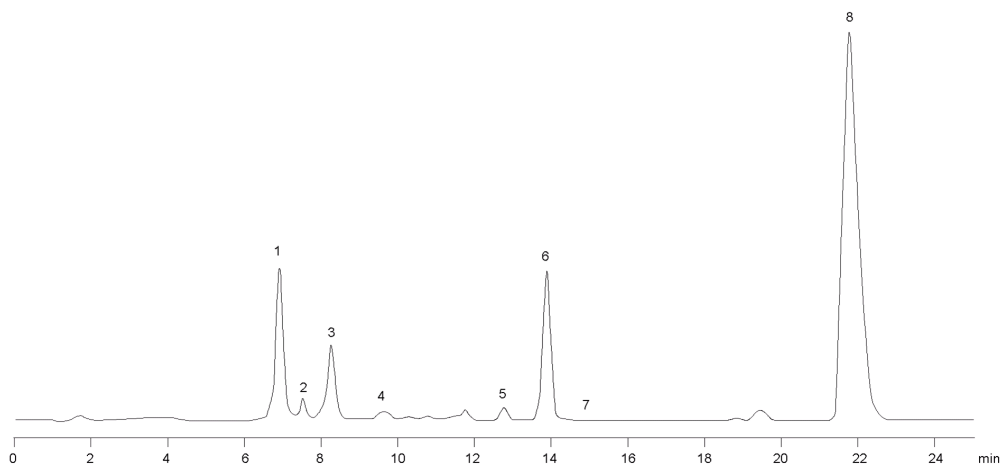
- SecurityGuard Cartridges, Carbo-H 4 x 3.0mm, 10/Pk Part No.: AJ0-4490

- Holder Part No.: KJ0-4282

16647



Products used in this application:



ANALYTES:

- 1 DP4+
- 2 DP3
- 3 Maltose
- 4 Glucose
- 5 Lactic acid
- 6 Glycerol
- 7 Acetic acid
- 8 Ethanol

