

# GC Application

ID No.: 16654

## Bioethanol by MSD on ZB-Bioethanol

**Column:** Zebron<sup>™</sup> ZB-Bioethanol, GC Cap. Column 30 m x 0.25 mm x 1.00  $\mu$ m, Ea

**Phase:** Unknown or Proprietary

**Dimensions:** 30 meters x 0.25 mm x 1  $\mu$ m

**Order No:** 7HG-G020-22

**Oven Profile:** 40°C for 5 min to 300°C @ 25°C/min

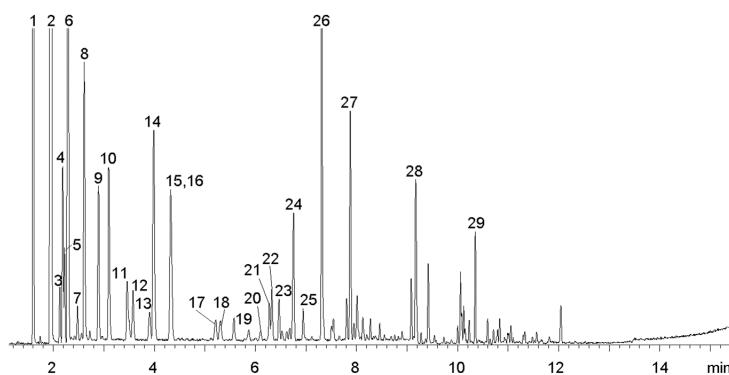
**Carrier Gas:** Constant Flow Helium, 1.2 mL/min

**Injection:** Split 100:1 0.1  $\mu$ L @ 240°C

**Detection:** Mass Selective (MSD) (230°C)

**Analyst Note:** Ethanol ~95%, Methanol ~2%, Gasoline ~2%, Fusel Alcohols ~1%

16654



Products used in this application:



## Bioethanol by MSD on ZB-Bioethanol

### ANALYTES:

- 1 Methanol
- 2 Ethanol
- 3 Acrolein
- 4 Acetone
- 5 2-Methylbutane
- 6 Isopropyl alcohol
- 7 Pentane
- 8 t-Butanol
- 9 Allyl alcohol
- 10 n-Propanol
- 11 2,3-Dimethylbutane
- 12 2-Methylpentane
- 13 3-Methylpentane
- 14 2-Butanol
- 15 Ethyl acetate
- 16 Hexane
- 17 Methylcyclopentane
- 18 2,4-Dimethylpentane
- 19 Benzene
- 20 Cyclohexane
- 21 2-Methylhexane
- 22 2,3-Dimethylpentane
- 23 3-Methylhexane
- 24 2,2,4-Trimethylpentane
- 25 Heptane
- 26 Acetal
- 27 Toluene
- 28 Xylene
- 29 Trimethylbenzene

